

Crownthorpe Model

Thoughtfully designed with lifestyle in mind, the Crownthorpe offers the flexibility of 3 or 4 bedrooms to suit your needs. At its heart, a light-filled kitchen with a well-appointed scullery makes entertaining easy and everyday living seamless. The two spacious living areas provide room for connection and retreat, while the master suite features a generous walk-in wardrobe and ensuite for added comfort.

Children's bedrooms are positioned at the opposite end of the home, alongside a family bathroom, large laundry, and boot room creating the perfect layout for busy households.

Whether you're planning a home for a growing family or a relaxing coastal escape, the Crownthorpe blends versatility, space, and style with ease.

BEDROOMS	3-4
BATHROOMS	2
FLOOR SIZE	149m ²
LENGTH	20.0m
WIDTH	7.6m
ROOF OPTIONS	hip roof
SUITABLE FOR	first home, rental, holiday home, farm accommodation

** Price and specifications subject to change*

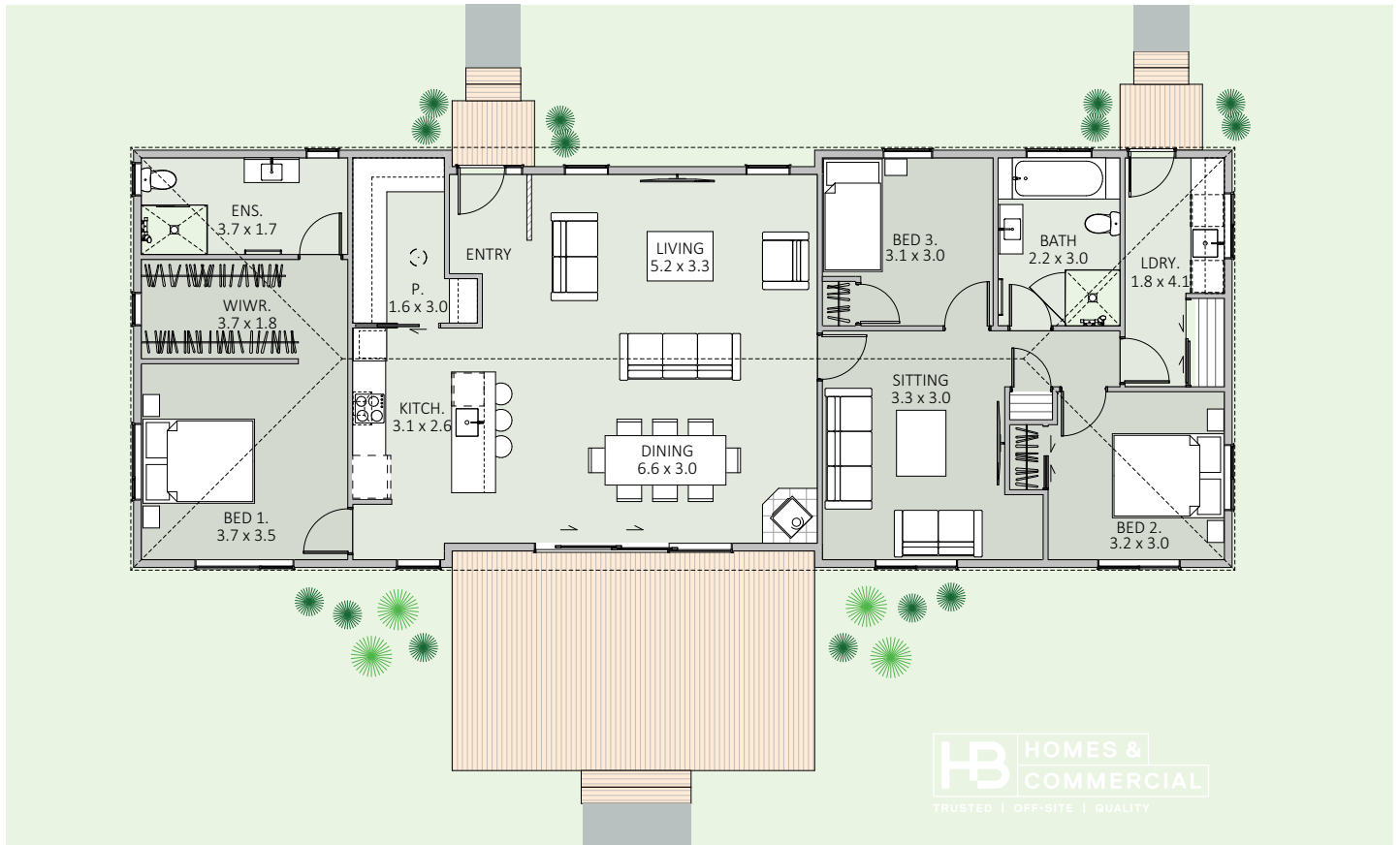


Come & see us at
1139 Maraekakaho Road
Longlands, Hastings

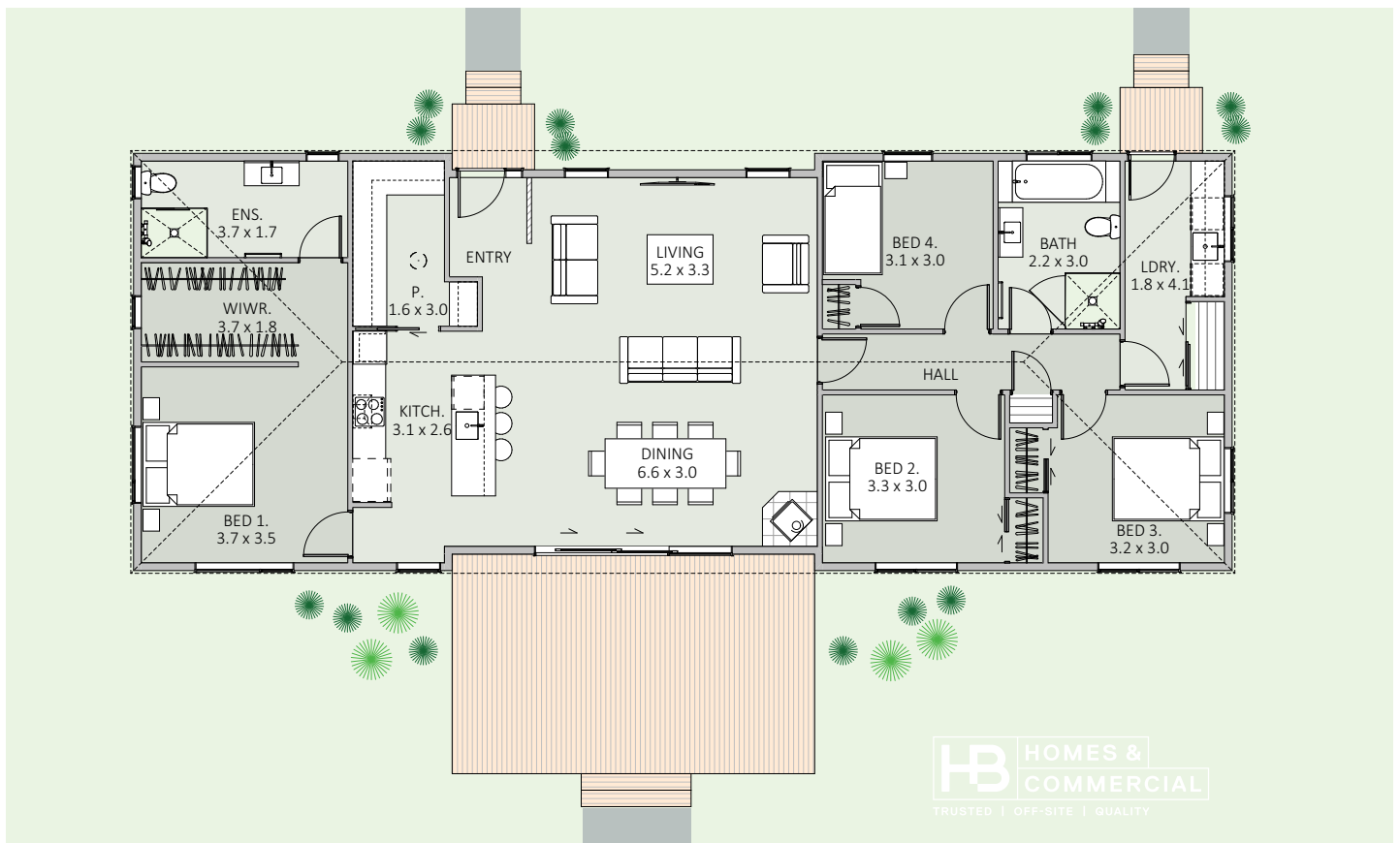
P. +64 6 870 8979
E. office@hbhomes.nz
W. www.hbhomes.nz



THREE BEDROOM OPTION



FOUR BEDROOM OPTION



SPECIFICATIONS:

INTERIOR <ul style="list-style-type: none"> - Insulation to floor, wall and ceiling - 2,200mm high exterior and interior joinery - 2,550mm stud height - 2x showers - 2x WCs - 1x bath - 2x vanities - Gas or electric water heating - Kitchen as shown* - Wardrobe shelving - Gib system interior wall lining - Electrical fit-out completed - Internal doors and hardware - Painted interior - Floor coverings - Fisher & Paykel appliances as specified - Daikin heat pump 	EXTERIOR <ul style="list-style-type: none"> - Abodo WB12 vertical Weatherboard - 9.5mm Weathertex Weathergroove - Colorsteel Maxam MC760 roof - Colorsteel quadrant spouting - Powdercoated aluminium thermally broken windows & doors - Treated #1 PR decking - Painted exterior PRICE EXCLUDES <ul style="list-style-type: none"> - Window dressings (blinds, curtains) - Geotech, delivery, foundations & site installations (<i>site specific</i>) - LTA fees, site consents, new connections & contributions (<i>site specific</i>) <p>* Price excludes fireplace, fridge & decking</p>
OPTIONS AVAILABLE <ul style="list-style-type: none"> - Alternative exterior linings - Alternative Bespoke kitchen options - Alternative bathroom options - Extra heatpumps, fire place and DVS systems - Different deck options and sizes available - Different roof styles - Three or four bedroom options 	