

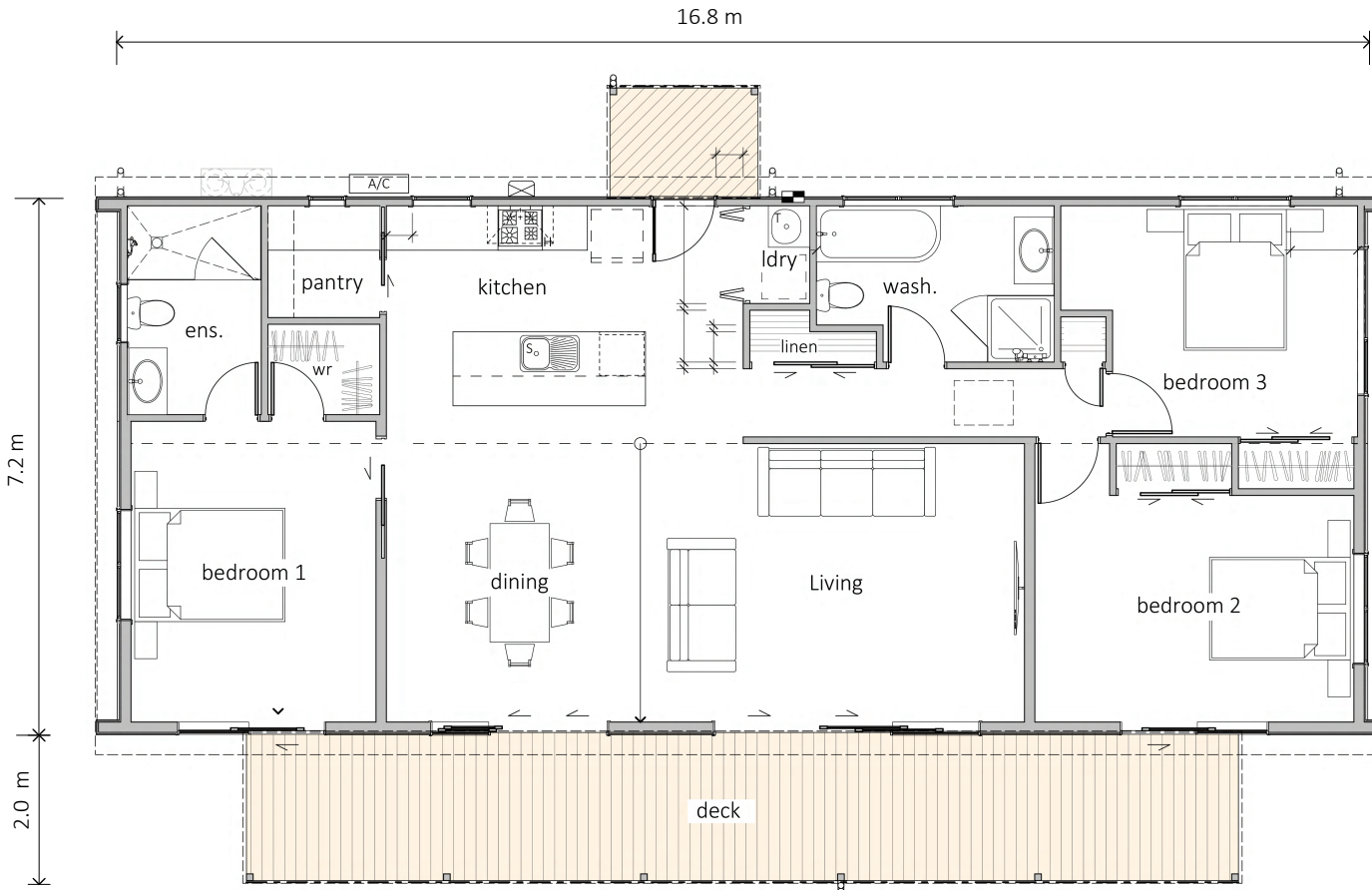


Pourerere

121m² — 3 bedrooms, 2 bathrooms

HAWKE'S
BAY HOMES
BETTER LIVING NOW





Pourerere

A monopitch home looks great at the coast or anywhere a home is required. Three spacious bedrooms accessed off a central living/ dining space with high raking ceilings. An island kitchen links to a large pantry and a back door entrance. Ensuite and bathroom are fitted with large tiles showers or optional acrylic showers.

SPECIFICATION

EXTERIOR

- Colorsteel Endura roofing
- Combination of weatherboard and vertical planking
- Colorsteel quadrant spouting
- Powdercoated aluminium double glazed windows & doors
- #1 PR decking
- Painted exterior.

INTERIOR

- Insulation to floor, wall and ceiling
- 2 x Wetfloor showers, 2 x WC, 2 x vanity and gas water heating
- Kitchen as shown
- Wardrobe shelving
- Gib system interior wall lining
- Electrical fit-out completed
- Internal doors and hardware
- Painted interior
- Floor coverings
- Appliances as specified
- Heat pump.

PRICE EXCLUDES

- Window dressings
- Site installation.

OPTIONS AVAILABLE

- Alternative exterior linings

* Price and specification subject to change



SALES OFFICE & MANUFACTURING
1139 Maraekakaho Road, Hastings, New Zealand
Ph. +64 6 870 8979 | P.O. Box 2543, Hastings 4156
www.HBhomes.nz