



# Pourerere

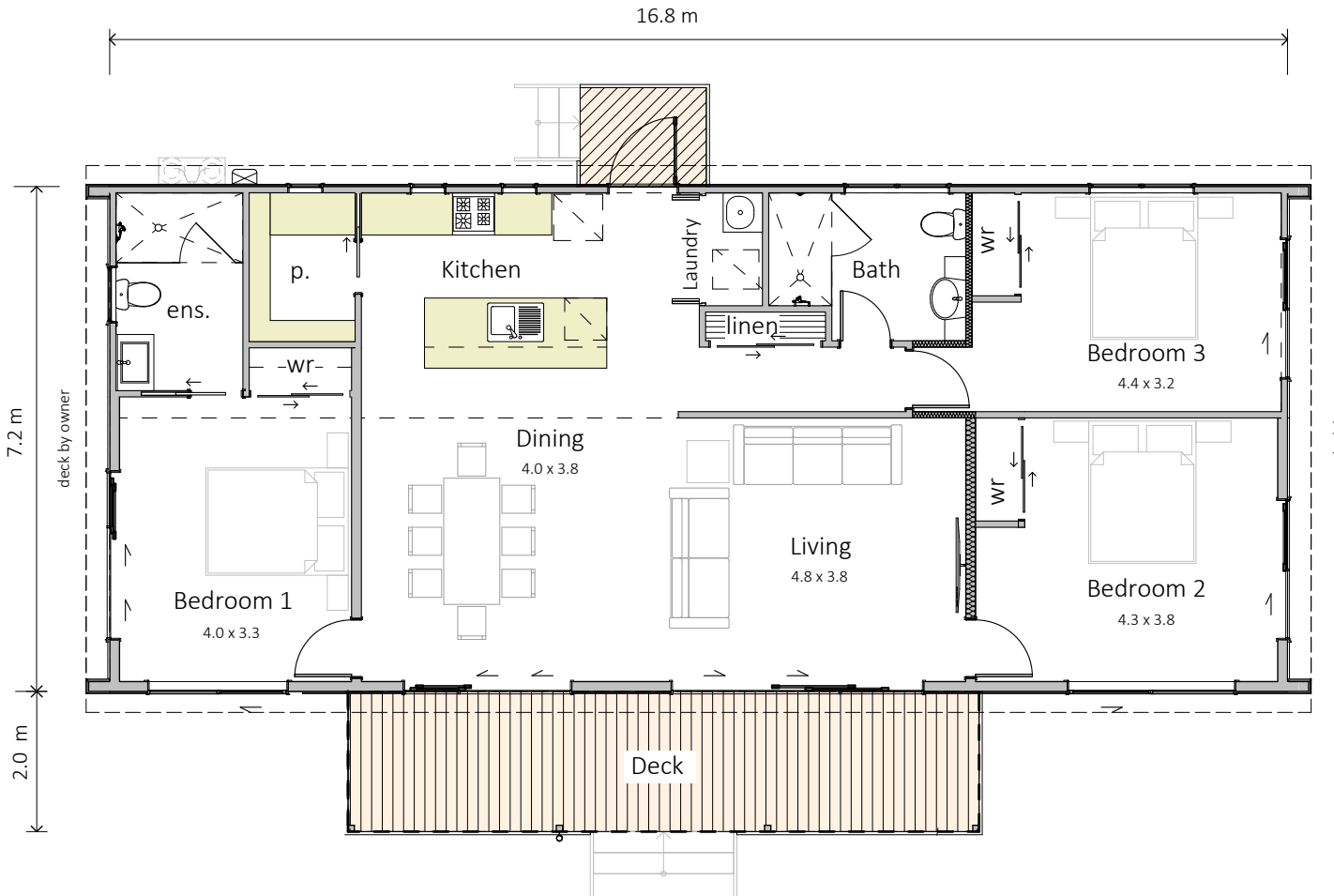
121m<sup>2</sup> — 3 bedrooms, 2 bathrooms

**HAWKE'S**  
**BAY HOMES**  
BETTER LIVING NOW



# Pourerere

A monopitch home looks great at the coast or anywhere a home is required. Three spacious bedrooms accessed off a central living/ dining space with high raking ceilings. An island kitchen links to a large pantry and a back door entrance. Ensuite and bathroom are fitted with large **tiles** showers or **optional** acrylic showers.



## SPECIFICATION

### EXTERIOR

- Colorsteel Endura roofing
- Combination of weatherboard and vertical planking
- Colorsteel quadrant spouting
- Powdercoated aluminium double glazed windows & doors
- #1 PR decking
- Painted exterior.

### INTERIOR

- Insulation to floor, wall and ceiling
- 2 x Wetfloor showers, 2 x WC, 2 x vanity and gas water heating
- Kitchen as shown
- Wardrobe shelving
- Gib system interior wall lining
- Electrical fit-out completed
- Internal doors and hardware
- Painted interior
- Floor coverings
- Appliances as specified
- Heat pump.

### PRICE EXCLUDES

- Window dressings
- Site installation.

### OPTIONS AVAILABLE

- Alternative exterior linings

\* Price and specification subject to change



SALES OFFICE & MANUFACTURING  
1139 Maraekakaho Road, Hastings, New Zealand  
Ph. +64 6 870 8979 | P.O. Box 2543, Hastings 4156  
[www.HBhomes.nz](http://www.HBhomes.nz)