



## Te Awa Model

The popular Te Awa model is a suitable home for a couple or small family. It can also be used as a secondary dwelling on a lifestyle property, either for a family member or as a revenue-generating accommodation offering.

Central living with three bedrooms with different options for kitchen layouts possible. This popular model comes with a covered veranda. Access to deck is available from living, bedroom one and bedroom two. A rear entry door accesses a short passage with access to laundry, bathroom, and separate toilet.

BEDROOMS	3
BATHROOMS	1.5
FLOOR SIZE	80m <sup>2</sup>
LENGTH	12.4m
WIDTH	6.4m
ROOF OPTIONS	gable roof
SUITABLE FOR	first home, rental, secondary dwelling, holiday home, granny flat

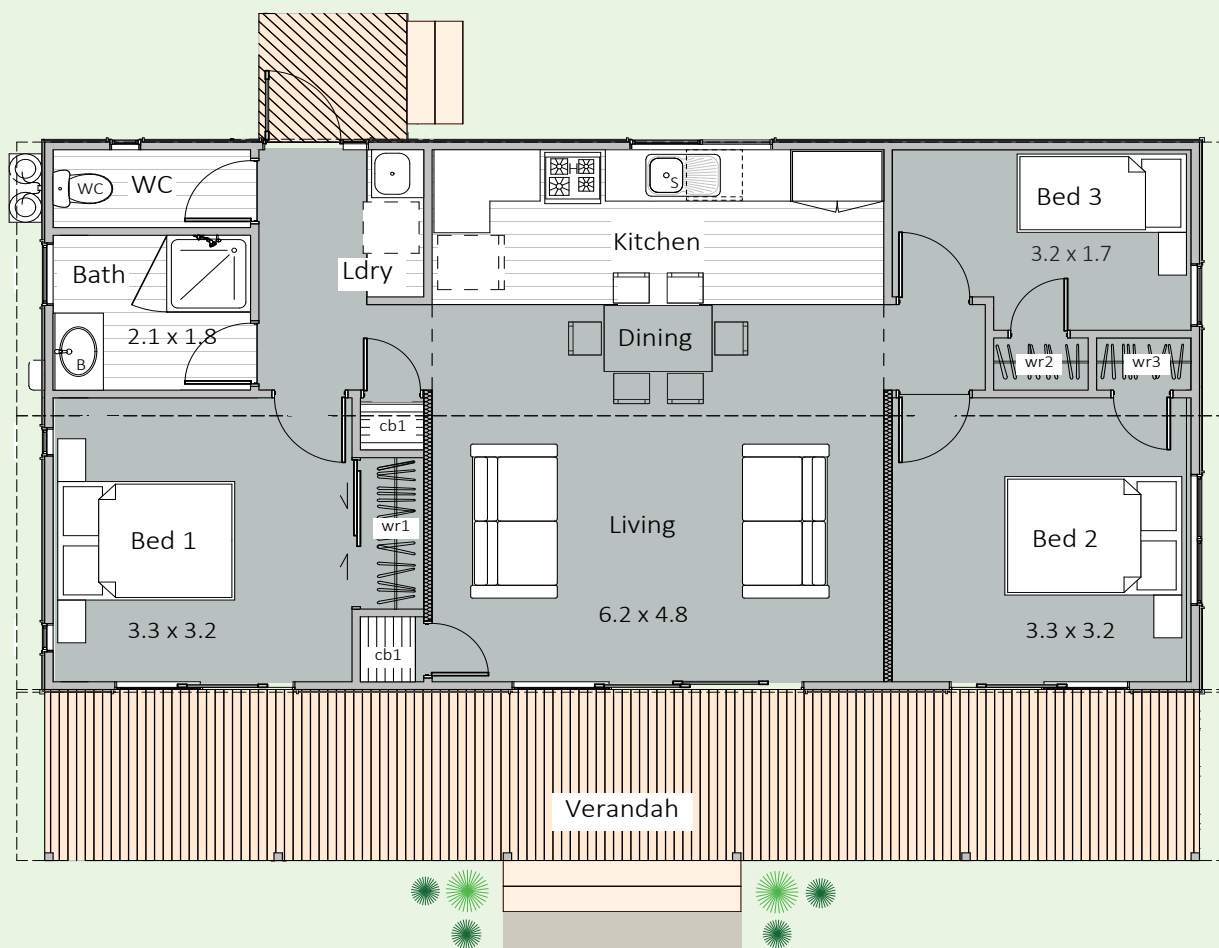
*\* Price and specifications subject to change*



**Come & see us at**  
1139 Maraekakaho Road  
Longlands, Hastings

P. +64 6 870 8979  
E. [office@hbhomes.nz](mailto:office@hbhomes.nz)  
W. [www.hbhomes.nz](http://www.hbhomes.nz)





## SPECIFICATIONS:

### INTERIOR

- Insulation to floor, wall and ceiling
- Shower
- WC
- Vanity
- Gas water heating
- Kitchen as shown
- Wardrobe shelving
- Gib system interior wall lining
- Electrical fit-out completed
- Internal doors and hardware
- Painted interior
- Floor coverings
- Appliances as specified
- Heat pump

### EXTERIOR

- Colorsteel Endura roofing
- 12mm Shadowclad Ultra groove
- Colorsteel quadrant spouting
- Powdercoated aluminium double glazed windows & doors
- Treated #1 PR decking
- Painted exterior

### PRICE EXCLUDES

- Window dressings (blinds, curtains)
- Geotech, delivery, foundations & site installations (*site specific*)
- LTA fees, site consents, new connections & contributions (*site specific*)

### OPTIONS AVAILABLE

- Alternative exterior linings
- Different deck options and sizes available

A lot of thought, design creative, practical building experience, and liveability options have been put into the creation of our Hawke's Bay Homes range. All our homes have been designed by an innovative and experienced architectural team. Each home is designed to maximise the living spaces and create a sense of space for every room in the house. All our transportable homes are specified with high quality, high-end finishes, and fittings and are completed to an impeccable standard. Remember too of course, that you can add, remove and make any changes that best reflect your personality and lifestyle.