

# HAWKE'S BAY HOMES

BETTER LIVING NOW



## Karamu Model

Discover the Karamu model - a 100m<sup>2</sup> home with 3 bedrooms, open living area, kitchen, 1.5 bathrooms, and laundry space.

Featuring a gable roof protected by buttress walls and lined with beautiful cedar planks, the Karamu offers a seamless indoor-outdoor living experience. The modern kitchen and open living space provide a perfect blend of style and functionality.

The formal entrance to our Karamu is via a side door leading into a wide passage joining bedrooms, bathroom, and WC. The Karamu design embodies contemporary living at its finest.

BEDROOMS	<b>3</b>
BATHROOMS	<b>1.5</b>
FLOOR SIZE	<b>100m<sup>2</sup></b>
LENGTH	<b>16m</b>
WIDTH	<b>6.8m</b>
ROOF OPTIONS	<b>gable roof</b>
ORIENTATIONS	<b>left &amp; right</b>
SUITABLE FOR	<b>first home, rental, secondary dwelling, holiday home</b>

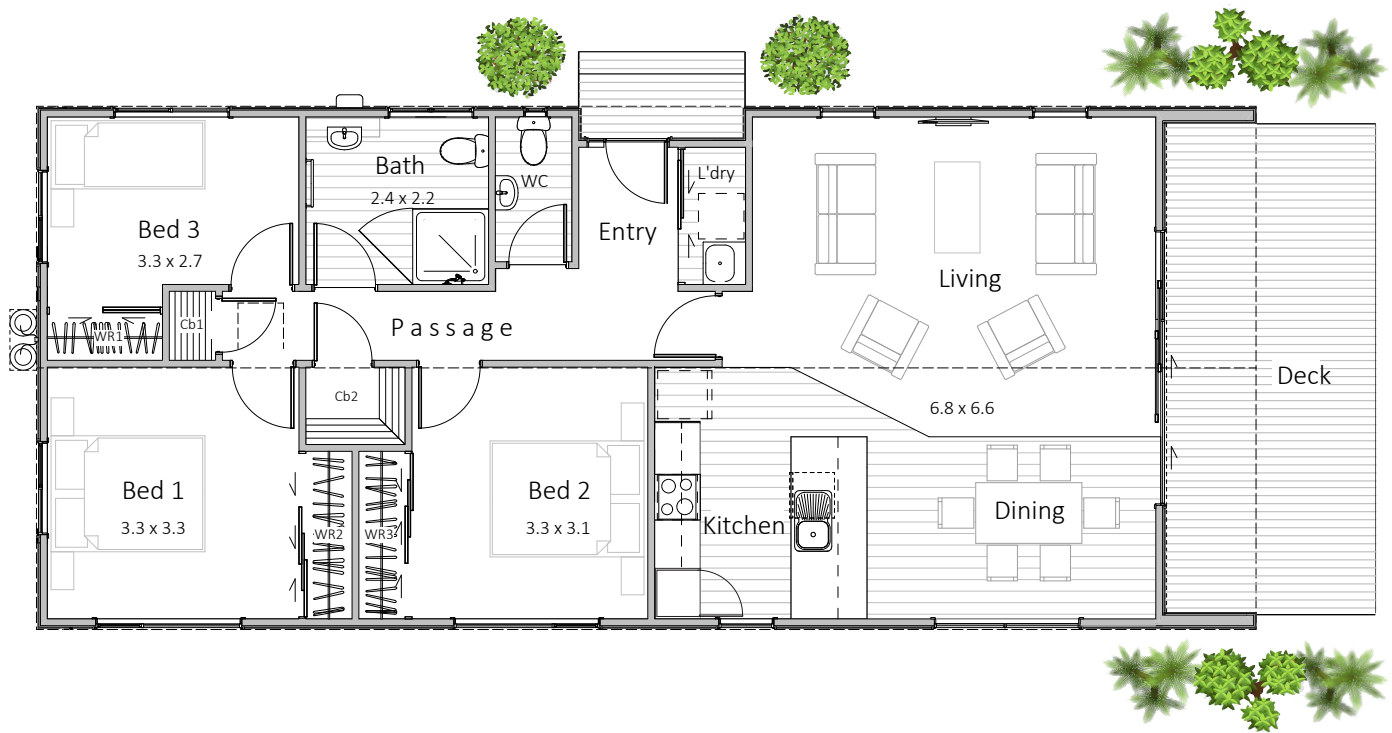
*\* Price and specifications subject to change*



**Come & see us at**  
1139 Maraekakaho Road  
Longlands, Hastings

P. +64 6 870 8979  
E. office@hbhomes.nz  
W. www.hbhomes.nz





## SPECIFICATIONS:

### INTERIOR

- Insulation to floor, wall and ceiling
- 1 x shower
- 2 x WC
- Vanity
- Gas water heating
- Kitchen as shown
- Wardrobe shelving
- Gib system interior wall lining
- Electrical fit-out completed
- Internal doors and hardware
- Painted interior
- Floor coverings
- Appliances as specified
- Heat pump

### EXTERIOR

- Colorsteel Endura roofing
- 12mm Shadowclad Ultra groove with Cedar board feature walls
- Colorsteel quadrant spouting
- Powdercoated aluminium double glazed windows & doors
- Treated #1 PR decking
- Painted exterior

### PRICE EXCLUDES

- Window dressings (blinds, curtains)
- Geotech, delivery, foundations & site installations (*site specific*)
- LTA fees, site consents, new connections & contributions (*site specific*)

### OPTIONS AVAILABLE

- Alternative exterior linings
- Different deck options and sizes available

A lot of thought, design creative, practical building experience, and liveability options have been put into the creation of our Hawke's Bay Homes range. All our homes have been designed by an innovative and experienced architectural team.

Each home is designed to maximise the living spaces and create a sense of space for every room in the house. All our transportable homes are specified with high quality, high-end finishes, and fittings and are completed to an impeccable standard. Remember too of course, that you can add, remove and make any changes that best reflect your personality and lifestyle.