



# Karamu

100m<sup>2</sup> — 3 bedrooms, 1.5 bathrooms

**HAWKE'S**  
**BAY HOMES**  
BETTER LIVING NOW



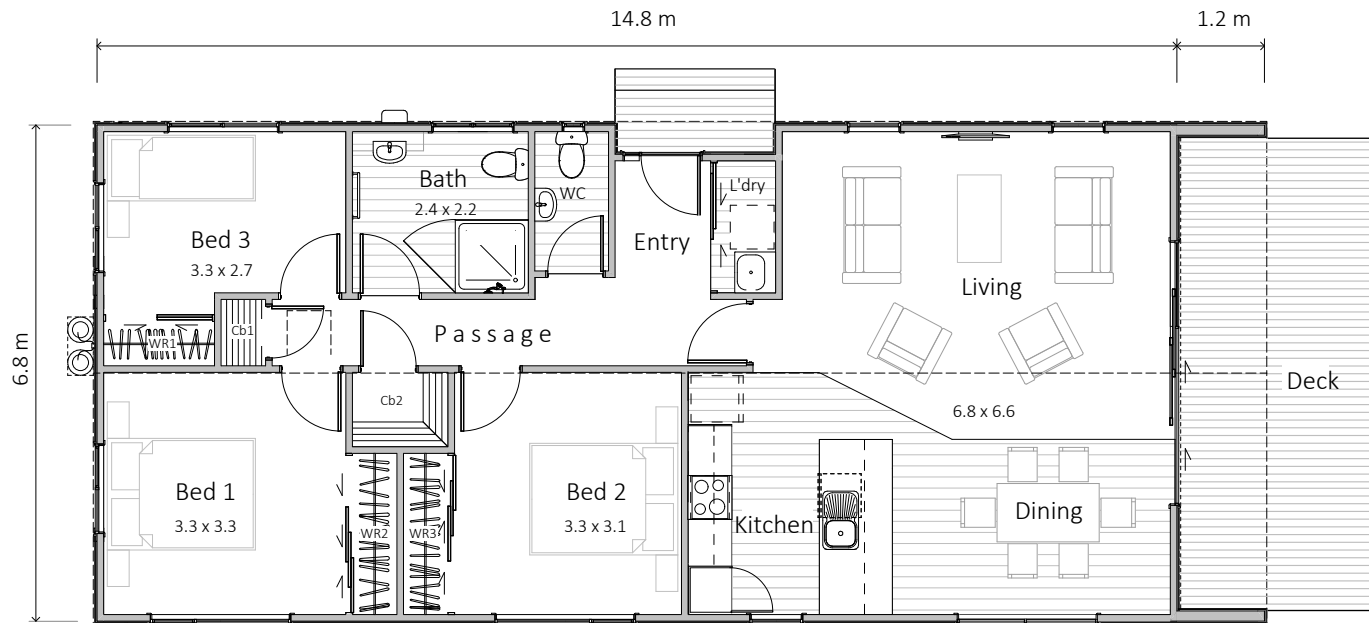
# SPECIFICATION

## EXTERIOR

- Colorsteel Endura roofing
- 12mm Shadowclad Ultra groove with Cedar board feature walls
- Colorsteel quadrant spouting
- Powdercoated aluminium double glazed windows & doors
- #1 Treated PR decking
- Painted exterior.

## INTERIOR

- Insulation to floor, wall and ceiling
- Shower, 2 x WC, vanity and gas water heating
- Kitchen as shown
- Wardrobe shelving
- Gib system interior wall lining
- Electrical fit-out completed
- Internal doors and hardware
- Painted interior
- Floor coverings
- Appliances as specified
- Heat pump.



This model is available in left and right orientations (right shown above)

# Karamu

The 100m<sup>2</sup> Karamu is a 3 bedroom configuration with an open plan living area, kitchen, 1.5 bathrooms, and laundry space. Karamu offers an uncomplicated gable roof with a focused covered porch protected by buttress walls and lined with cedar planks. Accessed is gained to an outside deck from a large sliding door linked to a large open plan living space containing a modern kitchen covered by a grooved raking ceiling. A formal entrance to our Karamu is via a side door into a wide passage joining bedroom spaces, bathroom, and a separate WC.

## BASE PRICE EXCLUDES

- Window dressings
- Site installation.

## OPTIONS AVAILABLE

- Alternative exterior linings



SALES OFFICE & MANUFACTURING  
1139 Maraekakaho Road, Hastings, New Zealand  
Ph. +64 6 870 8979 | P.O. Box 2543, Hastings 4156  
[www.HBhomes.nz](http://www.HBhomes.nz)