

HAWKE'S BAY HOMES

BETTER LIVING NOW



East Coast Model

Step into our delightful two-bedroom monopitch East Coast model. Featuring a central living area, 2 bedrooms, and 1.5 bathrooms, this cozy retreat is designed for comfort and style.

The kitchen and dining area are situated at the rear, while the living space and bedrooms seamlessly connect to the charming covered veranda. Bedroom 1 features a walk-in wardrobe.

Looking to enhance your outdoor experience? Choose from options for a rear deck to elevate your relaxation space.

BEDROOMS	2
BATHROOMS	1.5
FLOOR SIZE	80m ²
LENGTH	12.4m
WIDTH	8.4m
ROOF OPTIONS	monopitch roof
SUITABLE FOR	first home, rental, secondary dwelling, holiday home

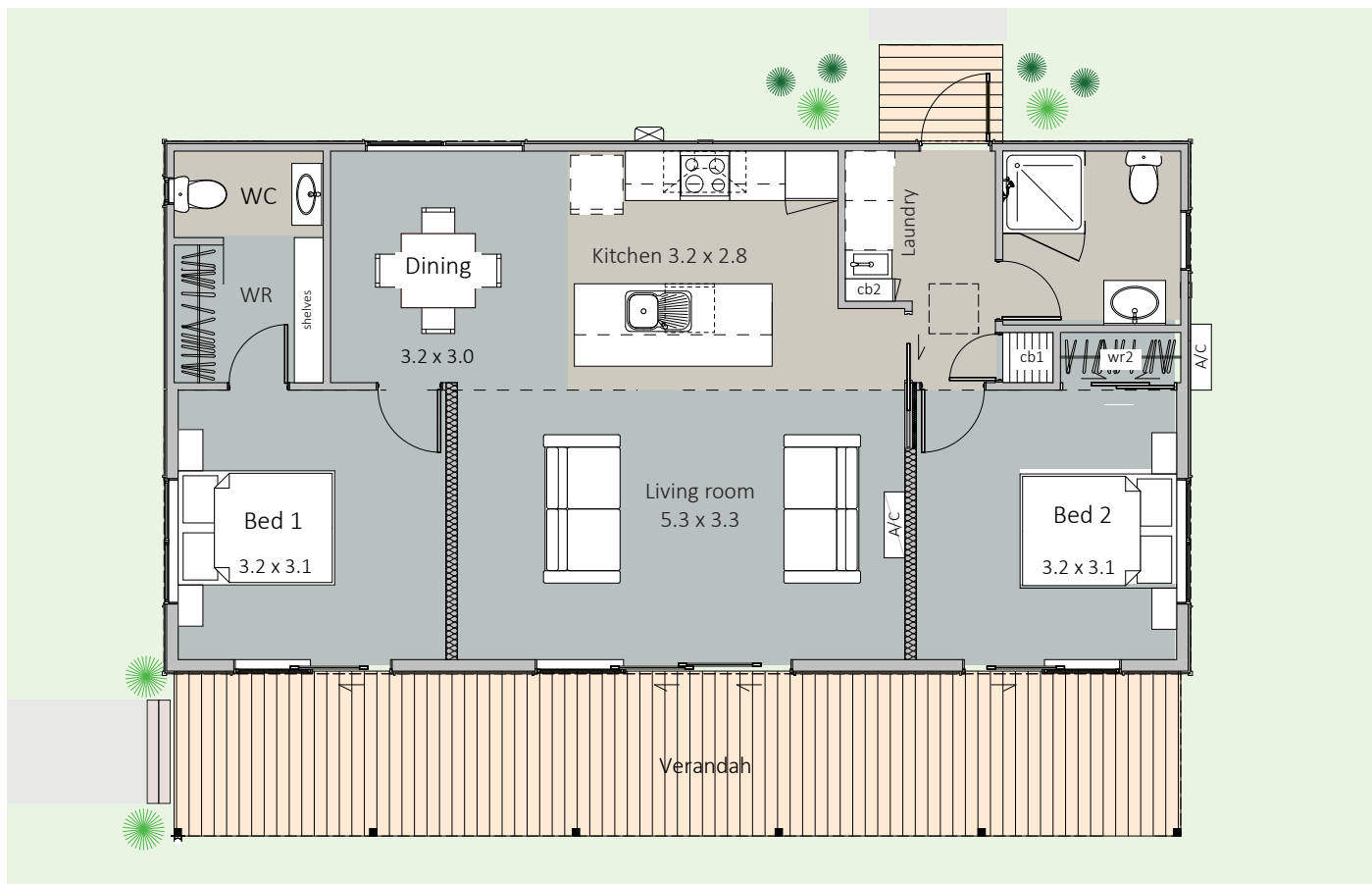
** Price and specifications subject to change*



Come & see us at
1139 Maraekakaho Road
Longlands, Hastings

P. +64 6 870 8979
E. office@hbhomes.nz
W. www.hbhomes.nz





SPECIFICATIONS:

INTERIOR

- Insulation to floor, wall and ceiling
- Shower
- 2x WCs
- Vanities
- Gas water heating
- Kitchen as shown
- Wardrobe shelving
- Gib system interior wall lining
- Electrical fit-out completed
- Internal doors and hardware
- Painted interior
- Floor coverings
- Fisher & Paykel appliances as specified
- Heat pump

EXTERIOR

- Colorsteel Endura roofing
- 12mm Shadowclad Ultra groove
- Colorsteel quadrant spouting
- Powdercoated aluminium double glazed windows & doors
- Treated #1 PR decking
- Painted exterior

PRICE EXCLUDES

- Window dressings (blinds, curtains)
- Geotech, delivery, foundations & site installations (*site specific*)
- LTA fees, site consents, new connections & contributions (*site specific*)

OPTIONS AVAILABLE

- Alternative exterior linings
- Different deck options and sizes available

A lot of thought, design creative, practical building experience, and liveability options have been put into the creation of our Hawke's Bay Homes range. All our homes have been designed by an innovative and experienced architectural team.

Each home is designed to maximise the living spaces and create a sense of space for every room in the house. All our transportable homes are specified with high quality, high-end finishes, and fittings and are completed to an impeccable standard. Remember too of course, that you can add, remove and make any changes that best reflect your personality and lifestyle.