

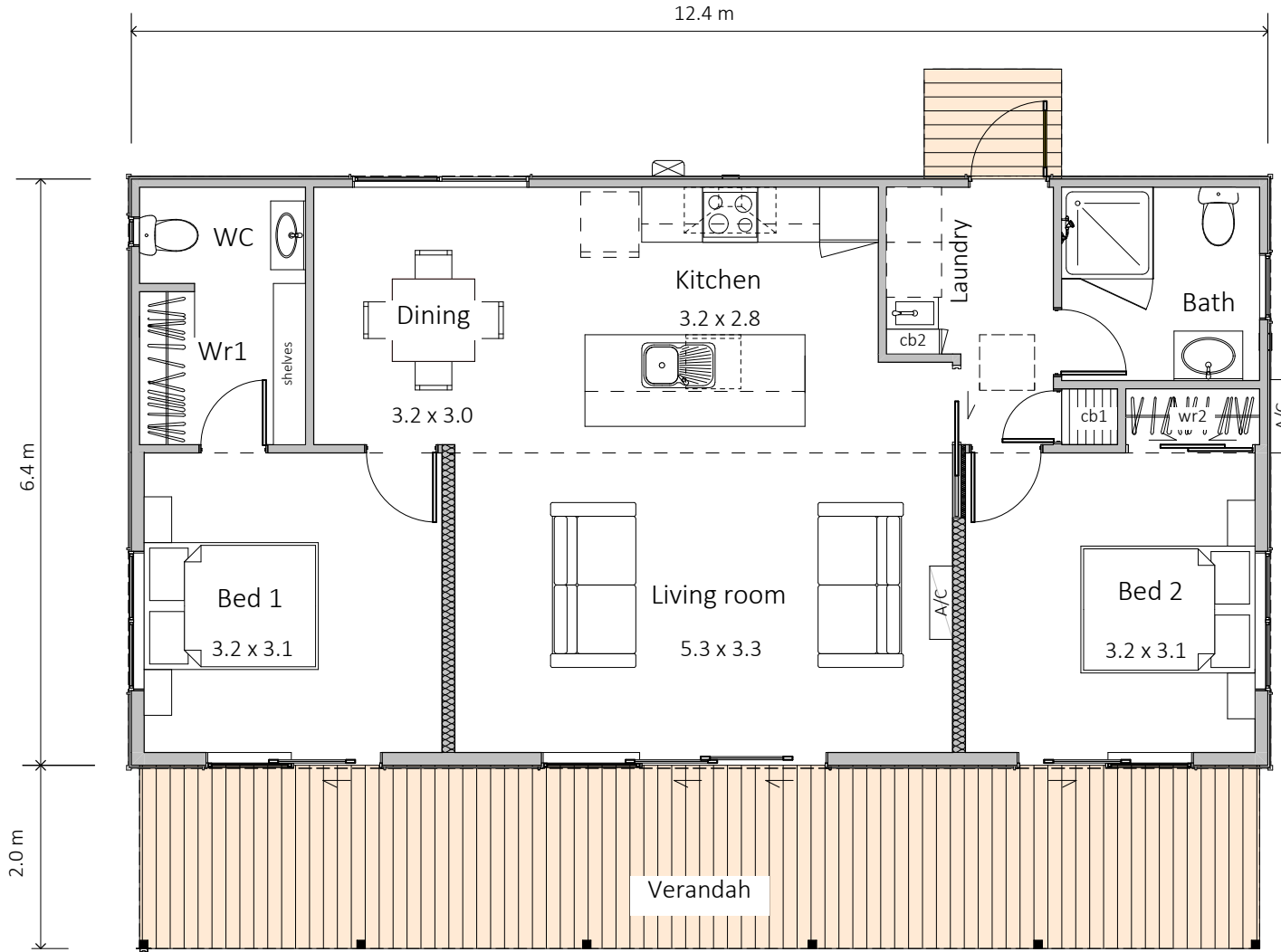


East Coast

80m2 — 2 bedrooms, 1.5 bathrooms

HAWKE'S
BAY HOMES
BETTER LIVING NOW





SPECIFICATION

EXTERIOR

- Colorsteel Endura roofing
- 12mm Shadowclad Ultra groove
- Colorsteel quadrant spouting
- Powdercoated aluminium double glazed windows & doors #1 covered treated PR decking
- Painted exterior.

INTERIOR

- Insulation to floor, wall and ceiling
- 1 x Shower, 2 x WC, 2 x vanity and gas water heating
- Kitchen as shown
- Wardrobe shelving
- Gib system interior wall lining
- Electrical fit-out completed
- Internal doors and hardware
- Painted interior
- Floor coverings
- Appliances as specified
- Heat pump.

PRICE EXCLUDES

- Window dressings
- Site installation.

OPTIONS AVAILABLE

- Alternative exterior linings

East Coast

A modern two-bedroom monopitch home or Bach with central living, 1.5 bathrooms. Kitchen / dining is located to the rear with living and bedrooms linked to covered veranda decking. Options available for a rear deck.



SALES OFFICE & MANUFACTURING
 1139 Maraekakaho Road, Hastings, New Zealand
 Ph. +64 6 870 8979 | P.O. Box 2543, Hastings 4156
www.HBhomes.nz