

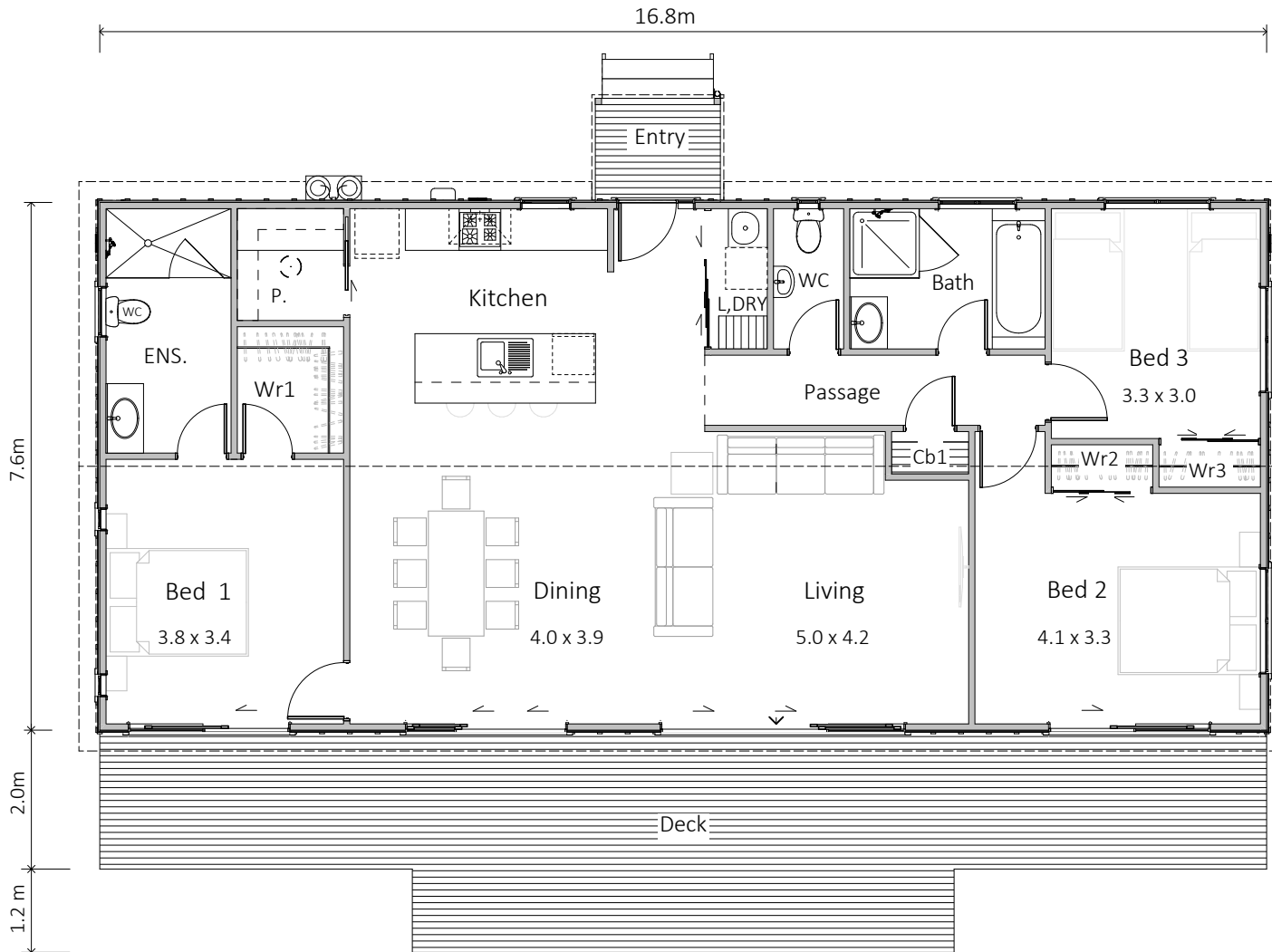


# Mangleton

128m<sup>2</sup> — 3 bedrooms, 2 bathrooms

**HAWKE'S**  
**BAY HOMES**  
BETTER LIVING NOW





## SPECIFICATION

### EXTERIOR

- Colorsteel Endura roofing
- 12mm Shadowclad with timber battens at 400ctrs
- Colorsteel quadrant spouting
- Powdercoated aluminium double glazed windows & doors
- Treated #1 PR decking
- Painted exterior.

### INTERIOR

- Insulation to floor, wall and ceiling
- 2 x Showers, bath, 2 x WC, vanities and gas water heating
- Kitchen as shown
- Wardrobe shelving
- Gib system interior wall lining
- Electrical fit-out completed
- Internal doors and hardware
- Painted interior
- Floor coverings
- Appliances as specified
- Heat pump.

### PRICE EXCLUDES

- Window dressings
- Site installation.

### OPTIONS AVAILABLE

- Alternative exterior linings

\* Price and specification subject to change



# Mangleton

A 128m<sup>2</sup> family home with spacious central living with three bedrooms at either end of the home supported with two bathrooms and a separate toilet. This home comes complete with central raking ceiling over a large kitchen and a walk-in pantry. The living area easily accommodates family gatherings with large openings linking the decks and living areas together. Different decking and exterior options are available.



SALES OFFICE & MANUFACTURING  
 1139 Maraekakaho Road, Hastings, New Zealand  
 Ph. +64 6 870 8979 | P.O. Box 2543, Hastings 4156  
[www.HBhomes.nz](http://www.HBhomes.nz)