

HAWKE'S BAY HOMES

BETTER LIVING NOW



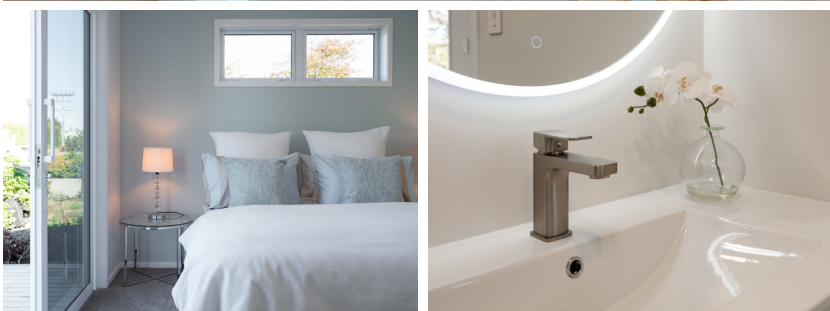
Otane Model - monopitch

Modern monopitch home with a central living space containing kitchen/dining and living space under a raking ceiling with high windows creating a light spacious feeling.

Three bedrooms are accessed at each end of the home. Bedroom one includes a walk-in wardrobe and ensuite. A separate bathroom and laundry are accessed off short passages to bedrooms two and three. A formal entrance door is included on the rear of the house.

BEDROOMS	3
BATHROOMS	2
FLOOR SIZE	100m ²
LENGTH	16.8m
WIDTH	6m
ROOF OPTIONS	monopitch & gable
SUITABLE FOR	first home, rental, secondary dwelling, holiday home

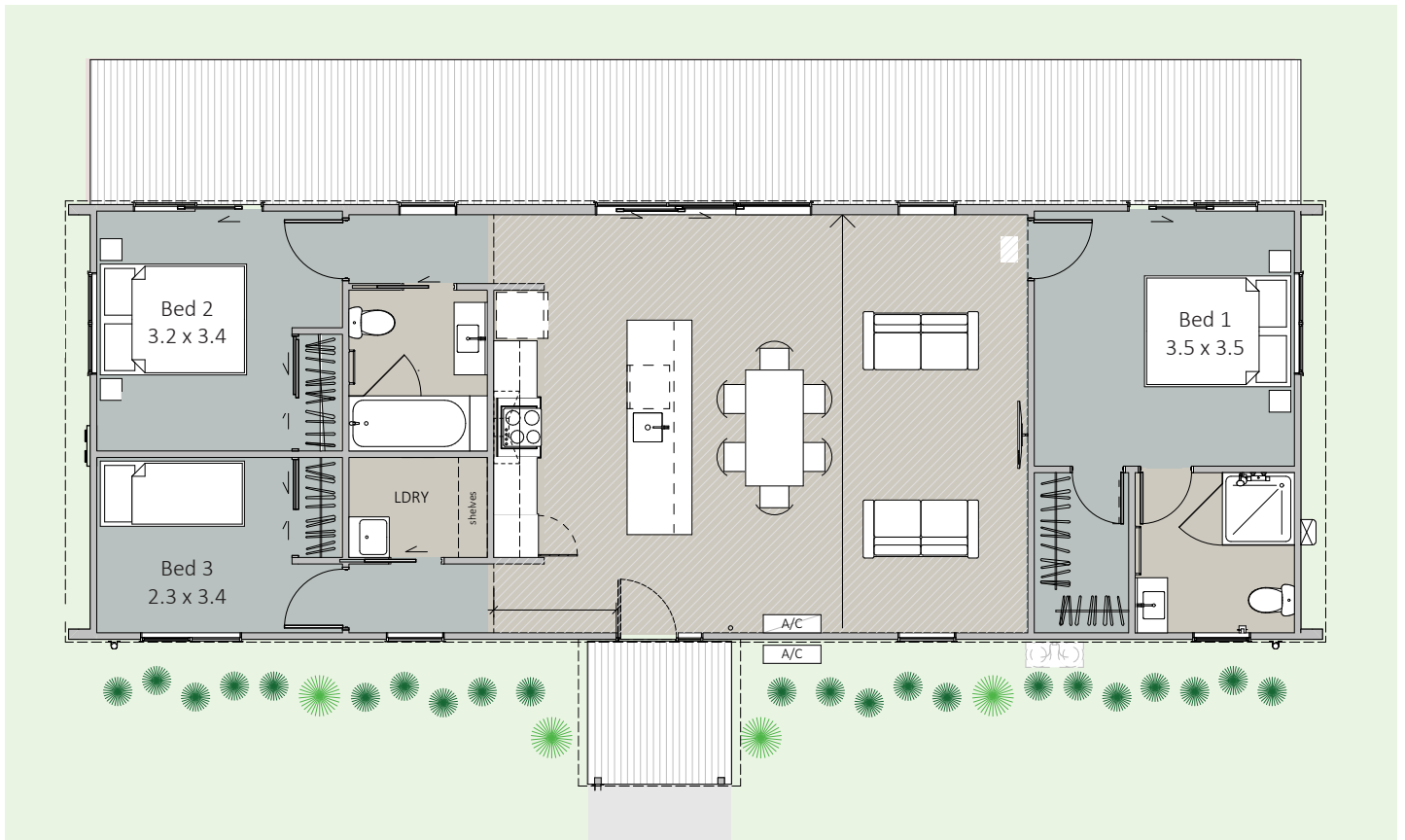
* Price and specifications subject to change



Come & see us at
1139 Maraekakaho Road
Longlands, Hastings

P. +64 6 870 8979
E. office@hbhomes.nz
W. www.hbhomes.nz





SPECIFICATIONS:

INTERIOR

- Insulation to floor, wall and ceiling
- 2 x showers
- 2 x WCs
- Vanities
- Gas water heating
- Kitchen as shown
- Wardrobe shelving
- Gib system interior wall lining
- Electrical fit-out completed
- Internal doors and hardware
- Painted interior
- Floor coverings
- Appliances as specified
- Heat pump

EXTERIOR

- Colorsteel Endura roofing
- 12mm Shadowclad Ultra groove
- Colorsteel quadrant spouting
- Powdercoated aluminium double glazed windows & doors
- Treated #1 PR decking
- Painted exterior

PRICE EXCLUDES

- Window dressings (blinds, curtains)
- Geotech, delivery, foundations & site installations (*site specific*)
- LTA fees, site consents, new connections & contributions (*site specific*)

OPTIONS AVAILABLE

- Alternative exterior linings
- Different deck options and sizes available

A lot of thought, design creative, practical building experience, and liveability options have been put into the creation of our Hawke's Bay Homes range. All our homes have been designed by an innovative and experienced architectural team. Each home is designed to maximise the living spaces and create a sense of space for every room in the house. All our transportable homes are specified with high quality, high-end finishes, and fittings and are completed to an impeccable standard. Remember too of course, that you can add, remove and make any changes that best reflect your personality and lifestyle.