



Otane

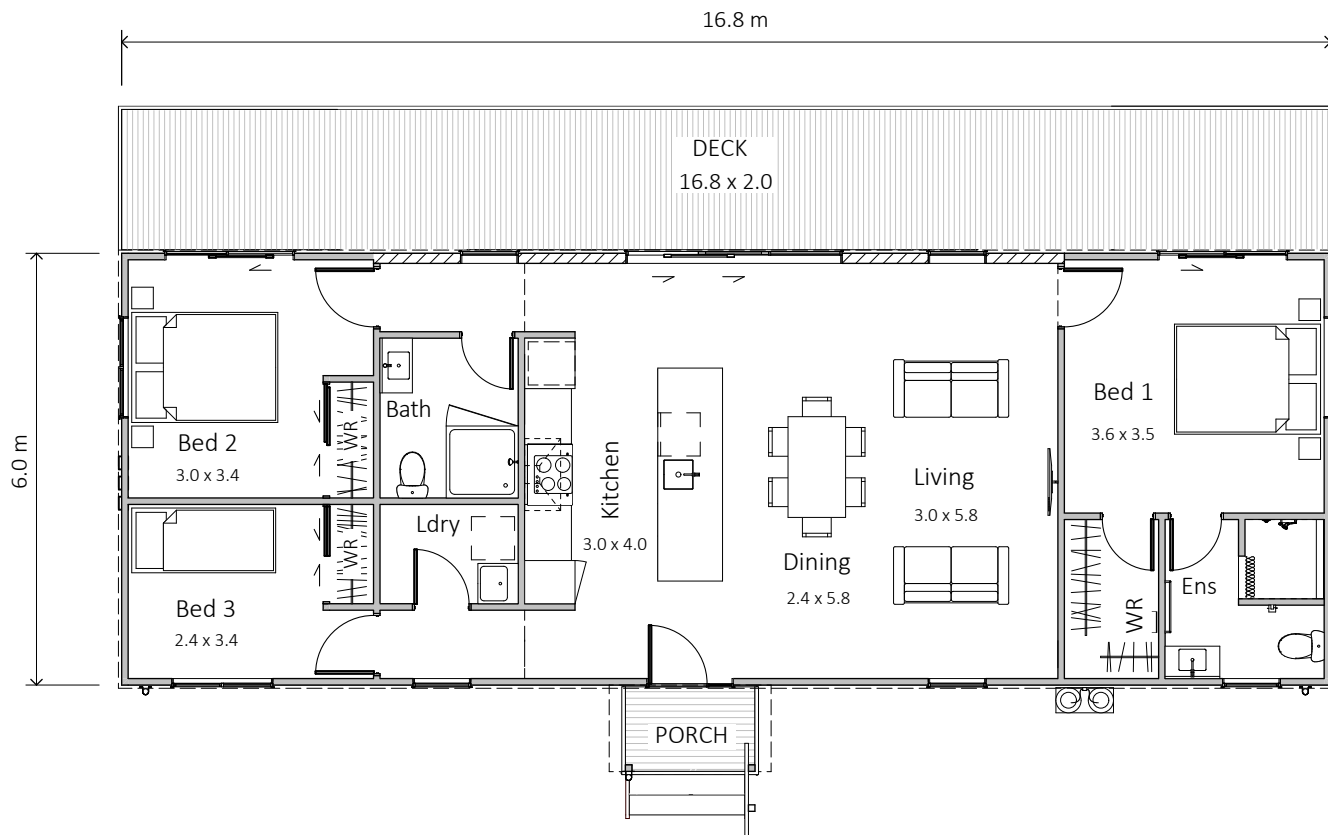
100m² — 3 bedrooms, 2 bathrooms

HAWKE'S
BAY HOMES
BETTER LIVING NOW



Otane

Modern monopitch home with a central social space containing kitchen/dining and living under a raking ceiling with high windows creating a light spacious feeling. Three bedrooms are accessed each end of the home. Bedroom one includes a walk-in wardrobe and ensuite. A separate bathroom and laundry are accessed off short passages to bedrooms. A formal entrance door is included.



SPECIFICATION

EXTERIOR

- Colorsteel Endura roofing
- 12mm Shadowclad Ultra groove
- Colorsteel quadrant spouting
- Powdercoated aluminium double glazed windows & doors
- #1 Treated PR decking
- Painted exterior.

INTERIOR

- Insulation to floor, wall and ceiling
- 2 x Shower, 2 x WC, vanity and gas water heating
- Kitchen as shown
- Wardrobe shelving
- Gib system interior wall lining
- Electrical fit-out completed
- Internal doors and hardware
- Painted interior
- Floor covering
- Appliances as specified
- Heat pump.

PRICE EXCLUDES

- Window dressings
- Site installation.

OPTIONS AVAILABLE

- Alternative exterior linings

* Price and specification subject to change



SALES OFFICE & MANUFACTURING
 1139 Maraekakaho Road, Hastings, New Zealand
 Ph. +64 6 870 8979 | P.O. Box 2543, Hastings 4156
www.HBhomes.nz