

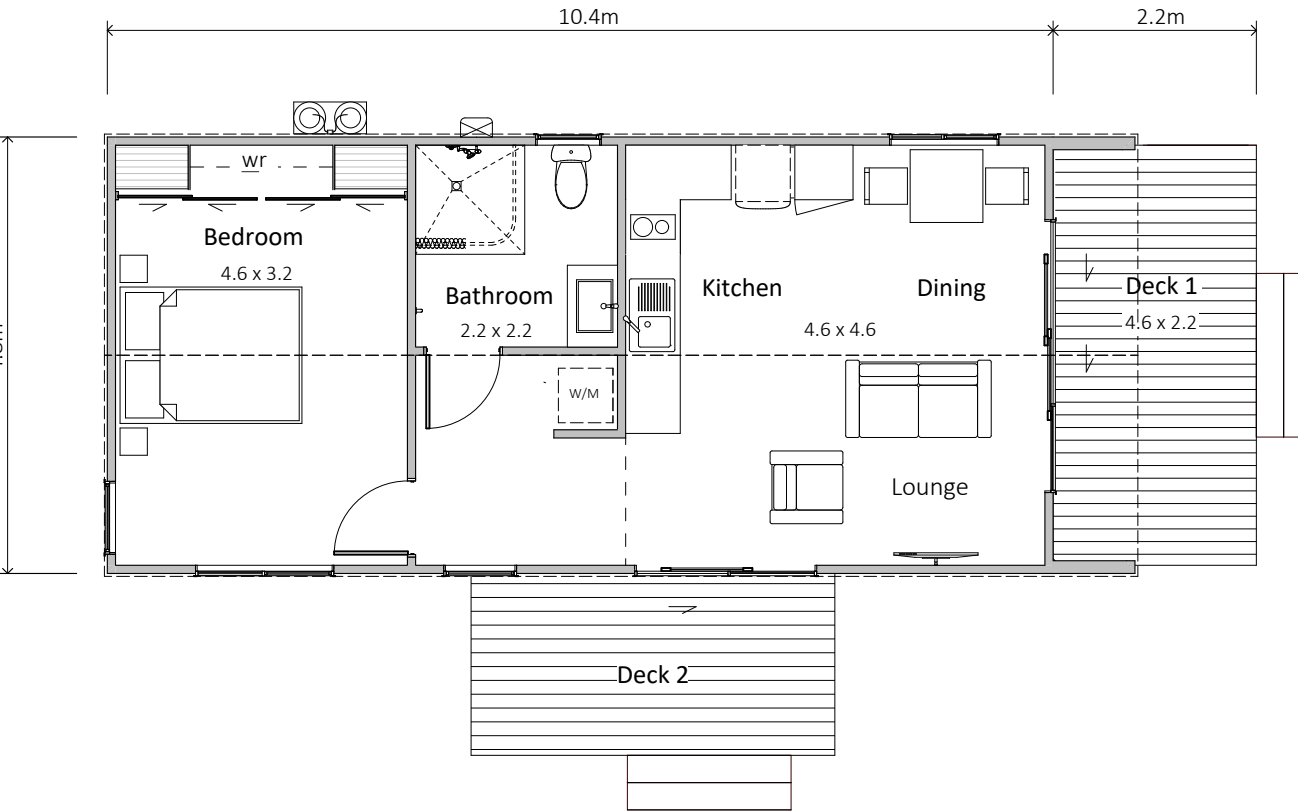


Parkvale

50m² — 1 bedroom, 1 bathroom

HAWKE'S
BAY HOMES
BETTER LIVING NOW





Parkvale

This compact home suits visitor accommodation or perfect for an additional home on your property. This home is self-contained with one bedroom and bathroom with a wet floor shower making it compliant for an accessible bathroom. Two outdoor living spaces one with covered entry.

SPECIFICATION

EXTERIOR

- Colorsteel Endura roofing
- 12mm Shadowclad Ultra groove with cedar feature walls
- Colorsteel quadrant spouting
- Powdercoated aluminium double glazed windows & doors
- #1 PR decking
- Painted exterior.

INTERIOR

- Insulation to floor, wall and ceiling
- Wet floor shower, WC, vanity and gas water heating
- Kitchen as shown
- Wardrobe shelving
- Gib system interior wall lining
- Electrical fit-out completed
- Internal doors and hardware
- Painted interior
- Floor coverings
- Appliances as specified
- Heat pump.

PRICE EXCLUDES

- Window dressings
- Site installation.

OPTIONS AVAILABLE

- Alternative exterior linings

* Price and specification subject to change



SALES OFFICE & MANUFACTURING
 1139 Maraekakaho Road, Hastings, New Zealand
 Ph. +64 6 870 8979 | P.O. Box 2543, Hastings 4156
www.HBhomes.nz