



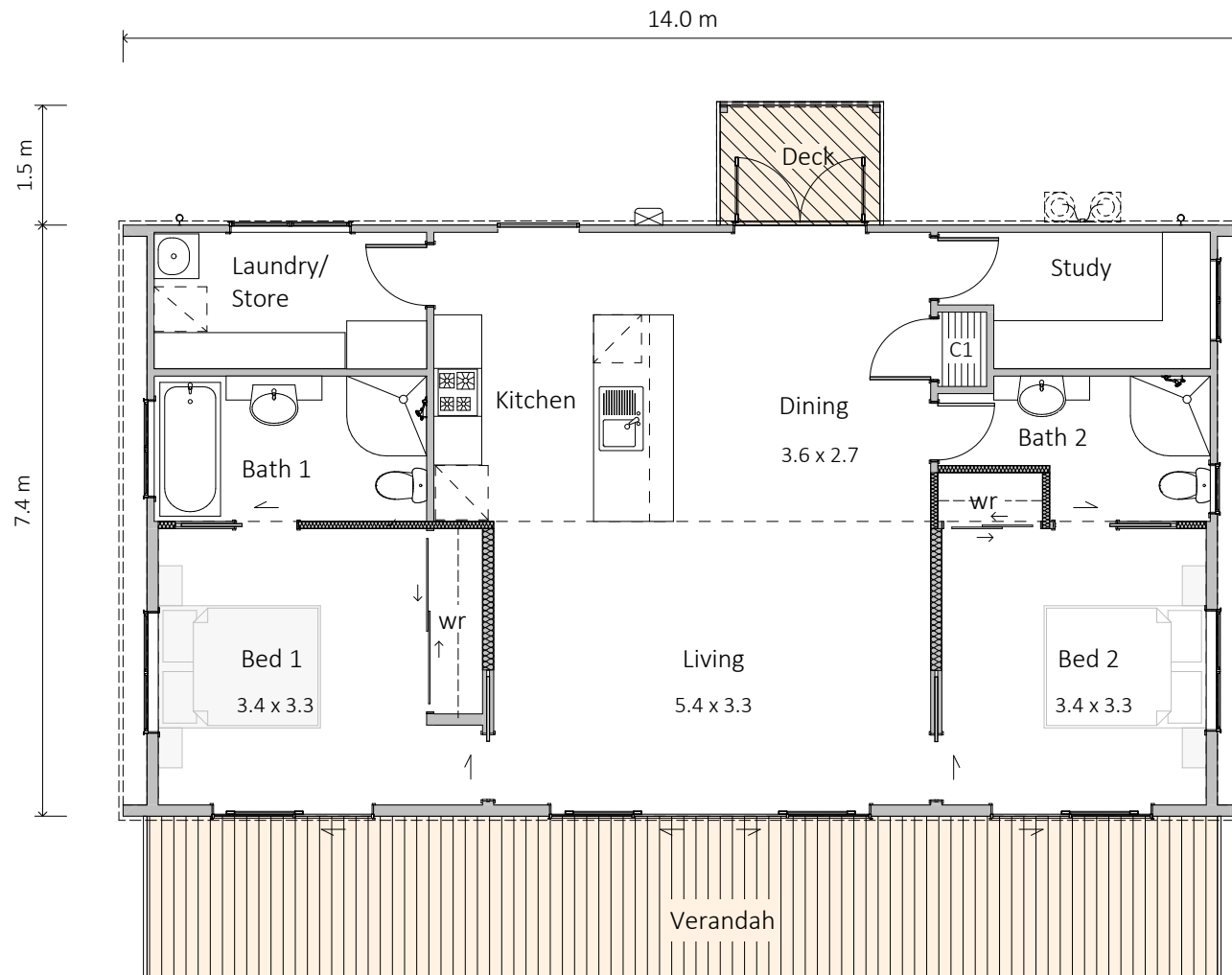
# Longlands

100m<sup>2</sup> — 2 bedrooms, 2 bathrooms



# Longlands

Maximised living space in this monopitch home with central living, no passage, two-bedroom and two bathrooms. A small room to the rear of the home can be configured as a small bedroom or office. Options existing for decking, opening into dining space or laundry room .



## SPECIFICATION

### EXTERIOR

- Colorsteel Endura roofing
- 12mm Shadowclad Ultra and weather boards
- Colorsteel quadrant spouting
- Powdercoated aluminium double glazed windows and doors
- #1 Treated PR decking
- Painted exterior.

### INTERIOR

- Insulation to floor, wall and ceiling
- 1 bath 2 x shower, 2x WC, 2 x vanity and gas water heating
- Kitchen as shown
- Gib system interior wall lining
- Electrical fit-out completed
- Internal doors and hardware
- Painted interior
- Floor coverings
- Appliances as specified
- Heat pump.

### PRICE EXCLUDES

- Window dressings
- Site installation.

### OPTIONS AVAILABLE

- Alternative exterior linings

\* Price and specification subject to change



SALES OFFICE & MANUFACTURING  
1139 Maraekakaho Road, Hastings, New Zealand  
Ph. +64 6 870 8979 | P.O. Box 2543, Hastings 4156  
[www.HBhomes.nz](http://www.HBhomes.nz)