

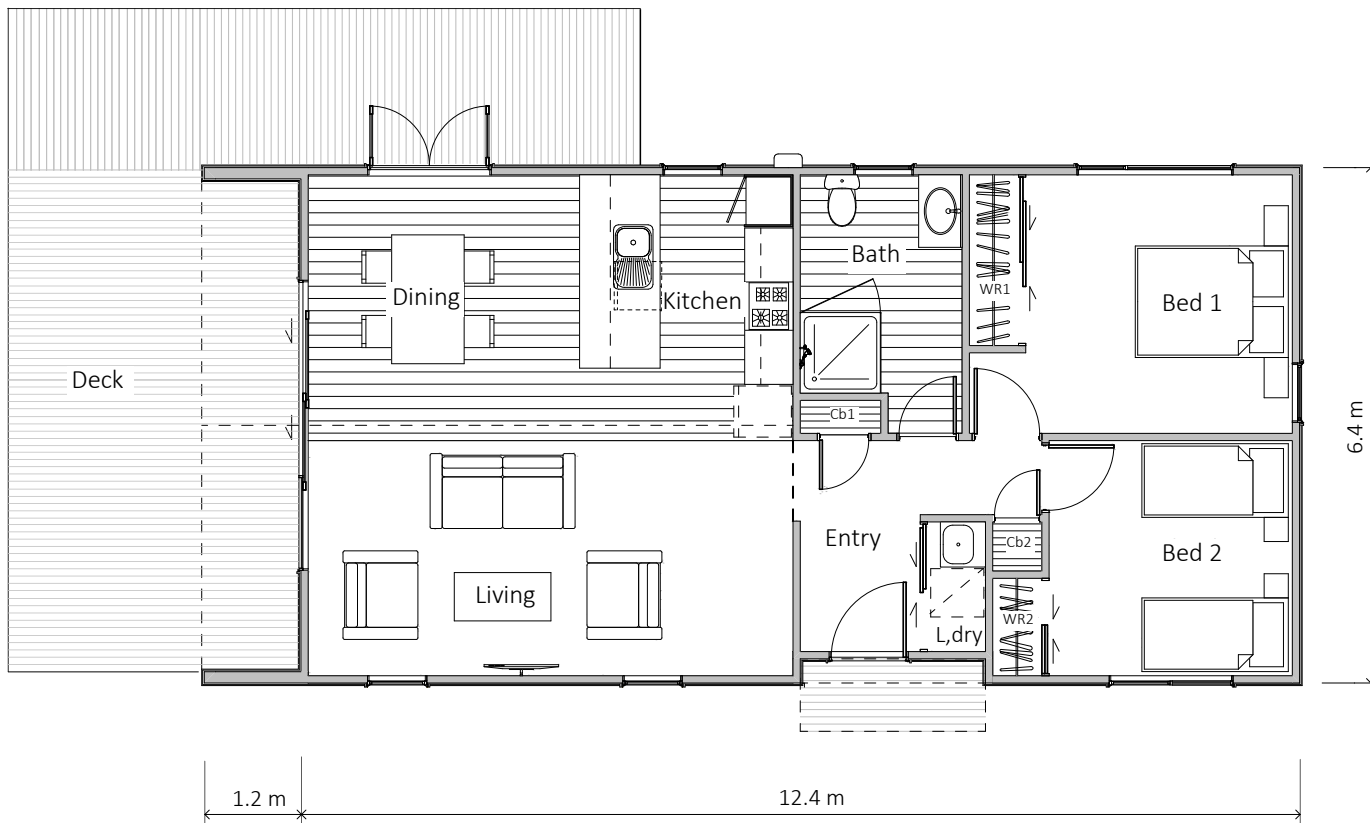


Irongate

80m² — 2 bedroom, 1 bathrooms

HAWKE'S
BAY HOMES
BETTER LIVING NOW





This model is available in left and right orientations (right shown above)

Irongate

Taking our popular Karamu model into an 80m² size, with two bedrooms, one bathroom and a formal entrance door. Two deck spaces are linked to the living space and a generous kitchen under a raking ceiling with a grooved effect. Exterior feature walls are lined with oiled cedar planks to compliment the covered deck

SPECIFICATION

EXTERIOR

- Colorsteel Endura roofing
- 12mm Shadowclad Ultra groove with Cedar board feature walls
- Colorsteel quadrant spouting
- Powdercoated aluminium double glazed windows & doors
- #1 PR decking
- Painted exterior.

INTERIOR

- Insulation to floor, wall and ceiling
- Shower, WC, vanity and gas water heating
- Kitchen as shown
- Wardrobe shelving
- Gib system interior wall lining
- Electrical fit-out completed
- Internal doors and hardware
- Painted interior
- Floor coverings
- Appliances as specified
- Heat pump.

PRICE EXCLUDES

- Window dressings
- Site installation.

OPTIONS AVAILABLE

- Alternative exterior linings



SALES OFFICE & MANUFACTURING
 1139 Maraekakaho Road, Hastings, New Zealand
 Ph. +64 6 870 8979 | P.O. Box 2543, Hastings 4156
www.HBhomes.nz