



Kaweka

132m² — 3 bedroom, 2 bathrooms

HAWKE'S
BAY HOMES
BETTER LIVING NOW



SPECIFICATION

EXTERIOR

- Colorsteel Endura roofing
- 12mm Shadowclad Ultra groove and Cedar feature boards
- Colorsteel quadrant spouting
- Powdercoated aluminium double glazed windows & doors
- Treated #1 PR decking
- Painted exterior.

INTERIOR

- Insulation to floor, wall and ceiling
- Showers, WC, vanities and gas water heating
- Kitchen as shown
- Wardrobe shelving
- Gib system interior wall lining
- Electrical fit-out completed
- Internal doors and hardware
- Painted interior
- Floor coverings
- Appliances as specified
- Heat pump.

EXCLUDES

- Window dressings
- Site installation.

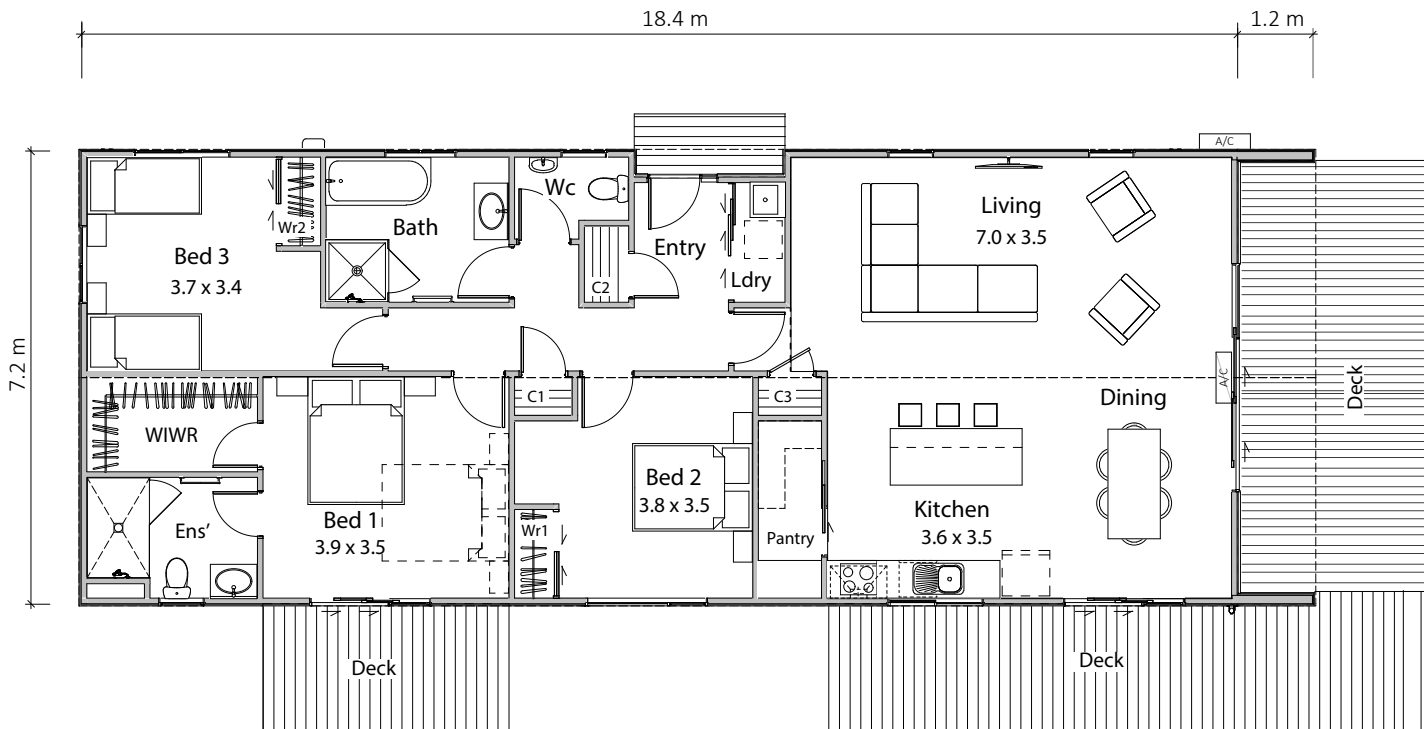
OPTIONS AVAILABLE

- Alternative exterior linings

* Price and specification subject to change



SALES OFFICE & MANUFACTURING
1139 Maraekakaho Road, Hastings, New Zealand
Ph. +64 6 870 8979 | P.O. Box 2543, Hastings 4156
www.hbhomes.nz



Kaweka

Our Kaweka model is the perfect family home with a spacious 132m² open living floor plan. This beautiful home does not only offer a great indoor, outdoor flow but also has the added advantage of a full-sized master bedroom with ensuite and walk-in wardrobe. Two additional double bedrooms with a bathroom and separate toilet will offer plenty of room for the kids. Cedar walls are just one of the highlight features of this home. A modern kitchen with walk-in pantry and ample storage will make entertaining effortless. A lovely family home with different decking options available.