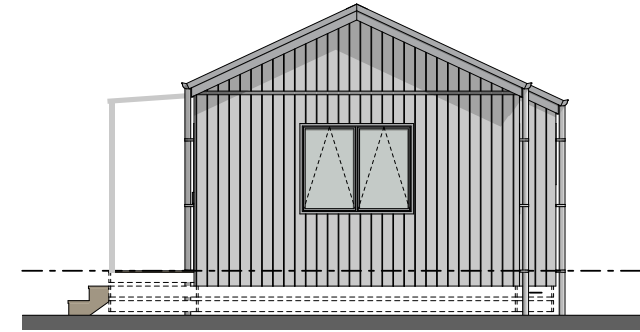
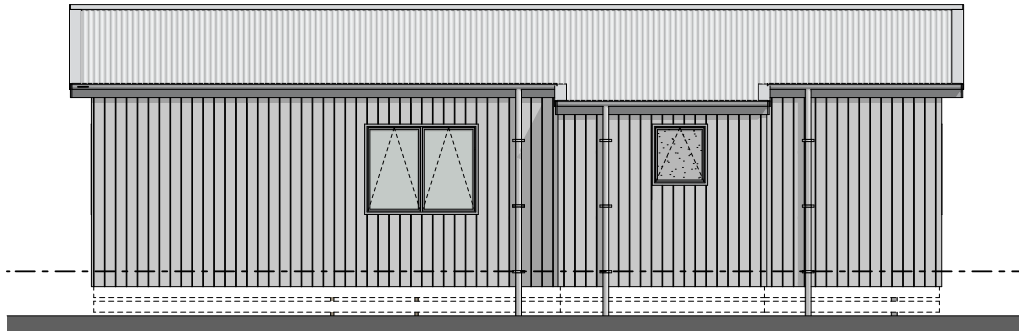




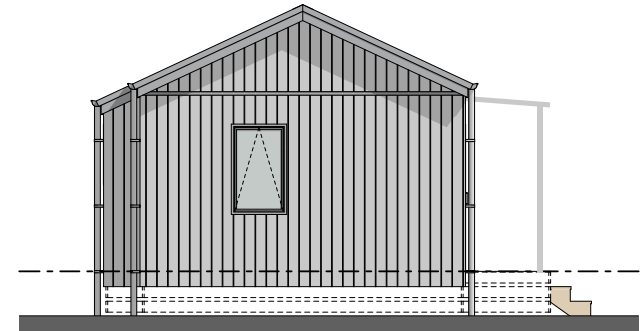
Elevation A



Elevation B



Elevation C



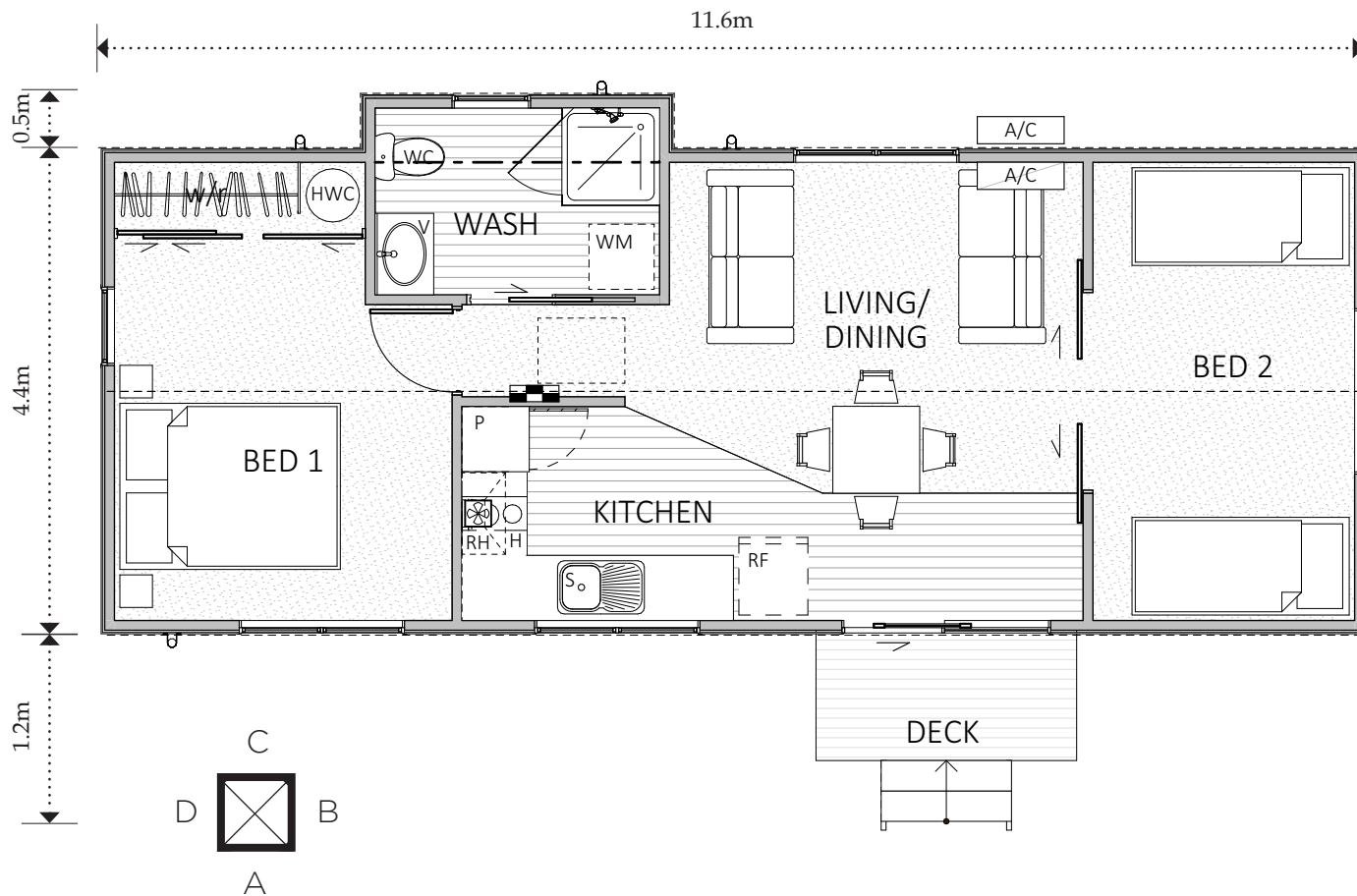
Elevation D

Flood Relief Housing (from \$202,900)

50m2 - 2 bedrooms, 1 bathroom

1139 Maraekakaho Road, Hastings, Hawke's Bay
Ph. +64 6 870 8979 | E: office@hbhomes.nz | www.hbhomes.nz





SPECIFICATION EXTERIOR

- Colorsteel Endura roofing
- 12mm Shadowclad Ultra groove
- Colorsteel quadrant spouting
- Powdercoated aluminium double glazed windows & doors with Low E Glass
- 4m² covered deck
- Painted exterior

INTERIOR

- Insulation to floor, wall and ceiling
- Shower, WC, vanity and HWC
- Kitchen as shown
- Wardrobe shelving
- Gib system interior wall lining
- Electrical fit-out completed
- Internal doors and hardware
- Painted interior
- Floor coverings
- Appliances as specified
- Heat pump

PRICE EXCLUDES

- Window dressings
- Dishwasher/ fridge
- Site consent
- Transportation
- Foundations
- Connection to services

OPTIONS AVAILABLE

- Price and specification subject to change

RELIEF HOUSING FOR EAST COAST FLOODINGS

After the major flooding that destroyed too many parts of our beautiful community, we know it has left many of you in need of temporary housing. Hawke's Bay Homes has come up with a relief housing solution that will allow you to live on your land while your home can get rebuilt.

This 50m² build offers two bedrooms, and one bathroom with an open living plan that holds a kitchenette and is great for a temporary housing solution and a future rental.

If this option doesn't suit you, Hawke's Bay Homes can build your main dwelling or a bigger model that can be used as a secondary dwelling once your home has been rebuilt.

**HAWKE'S
BAY HOMES**
BETTER LIVING NOW

