

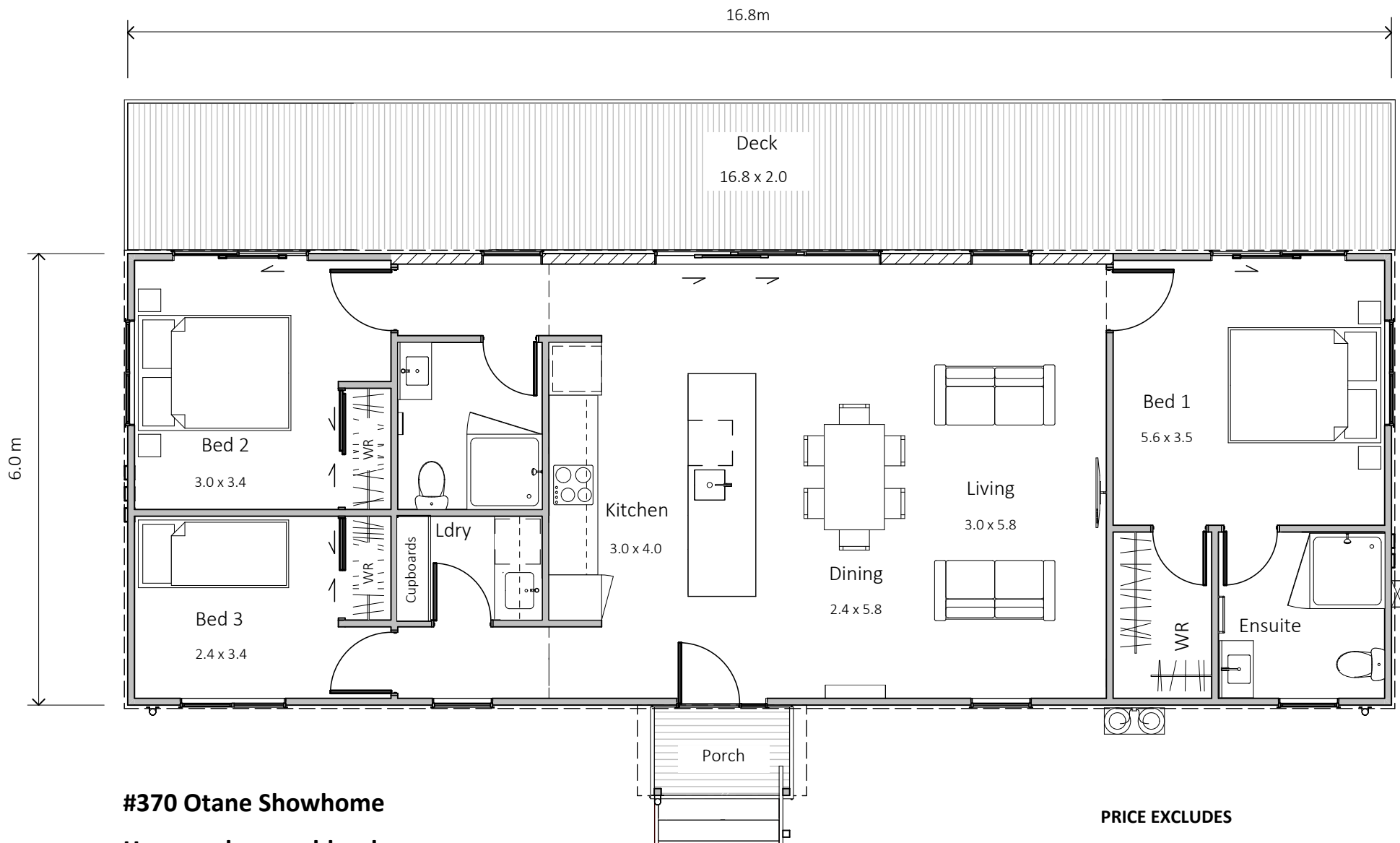


# Otane #370

100m2 — 3 bedrooms, 2 bathrooms

**HAWKE'S**  
**BAY HOMES**  
BETTER LIVING NOW





### #370 Otane Showhome

Has now been sold, ask our sales staff for updated pricing.

#### PRICE EXCLUDES

Window dressings  
Delivery costs  
Site installation.

# Otane

Modern monopitch home with a central social space containing kitchen/dining and living under a raking ceiling with high windows creating a light spacious feeling. Three bedrooms are accessed each end of the home. Bedroom one includes a walk-in wardrobe and ensuite. A separate bathroom and laundry are accessed off short passages to bedrooms. A covered formal entrance door welcomes you to this home.

**HAWKE'S**  
**BAY HOMES**  
BETTER LIVING NOW



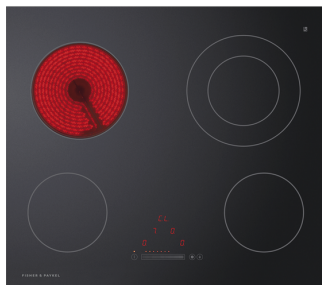


## FISHER & PAYKEL

Fisher & Paykel  
60cm Powerpack (integrated)  
HP60ICSX3



Fisher & Paykel  
60cm Electric Cooktop  
CE604DTB1



Fisher & Paykel  
60cm Built-In Oven  
OB60SC7CEX2



## DAIKIN



Daikin  
Heat pump  
FTZXM60UVMZ



Fisher & Paykel  
Dishwasher  
DW60FC2X1

## OPTIONAL



Fisher & Paykel  
68cm Freestanding Refrigerator/ Freezer 413L  
E442BRXFDU5

# Otane

APPLIANCES INCLUDED and OPTIONAL APPLIANCES

**HAWKE'S**  
**BAY HOMES**  
BETTER LIVING NOW



# SPECIFICATION

<p><b>SUB-FLOOR &amp; FLOORING</b> 20mm flooring over 145x45 floor joist at 450crs and 2x145x90 bearers. Foundations standard NZ3604.</p> <p><b>WALL &amp; CEILING SYSTEM</b> 90x45mm H1.2 J frame timber frames lined with Gib board inside and exterior IBS OS'brace RAP with cavity battens for exterior lining. Raking ceiling in Living space.</p> <p><b>FASCIA SPOUTING &amp; DOWNPIPES</b> Timber pre-primed with Colorsteel quadrant 0.4 guttering and round PVC downpipes.</p> <p><b>ROOF STRUCTURE</b> 0.4 Colorsteel Endura MC760 roofing – Colour Sandstone grey.</p> <p><b>EXTERIOR CLADDING</b> 12mm Shadowclad Ultra Groove. Painted Resene Foggy Grey.</p> <p><b>INSULATION</b> Underfloor, Walls and Ceiling.</p> <p><b>ALUMINIUM JOINERY</b> Double glazed Artic White power coated aluminium grey tinted glass, exterior windows, and doors. Obscure glazing to Bathroom and Ensuite.</p> <p><b>ENTRANCE DOOR</b> Grey Friar coloured aluminium grooved door and side light with Windsor hardware.</p> <p><b>DECKS</b> 14m2 uncovered PR decking and covered entry porch.</p>	<p><b>KITCHEN UNITS</b> Bench tops are Archant Frost White engineered Stone 30mm thick with square edges. The sink insert is a Archant Robiq 500-10, Satin. Units are made of 16mm white gloss HMR Board. Prefinished board Laminex NZ MELTECA 18mm Colour Snowdrift Satin. Drawers are blum soft close drawers with full extension concealed runners.</p> <p><b>LAUNDRY</b> Formica bench top, with overhead cupboards and large storage cupboards.</p> <p><b>KITCHEN APPLIANCES</b> Included as specified.</p> <p><b>PLUMBING</b> 2 x Uno CC BTW Toilet Suite 2 x Heirloom Genesis 825 x 450 Heated towel rail.</p> <p><b>SHOWERS</b> 2 x1000 x 1000 2-sided easy seal shower tray with one-piece flat acrylic liner and easy clean waste. Project Shower Mixer and Shower slide Chrome.</p> <p><b>VANITY BATHROOM</b> 2 x 900mm 1 Drawer wall hung wood grain finish. Project Basin Mixer Chrome.</p> <p><b>VANITY ENSUITE</b> 2 x 750mm 1 Drawer wall hung wood grain finish. Project Basin Mixer Chrome.</p> <p><b>VENTILATION</b> Ventilating Solar tube in bathroom.</p>	<p><b>ELECTRICAL</b> Internal single phase distribution board located as per design.</p> <p><i>Installed fittings:</i> White ceiling mounted LED lights with Feature hanging lights over island bench. PDL Iconics range of switching and face plates. 6 x Exterior wall mounted LED lights.</p> <p>Owner to organise external service provider for power account and connection.</p> <p><b>HEAT PUMP</b> Daikin heat pump FTZXM60UVMZ.</p> <p><b>SMOKE ALARM</b> Smoke detectors that comply with the requirements of NZBC F7.</p> <p><b>TV CONNECTION</b> 1 x TV point., Owner to organise external service provider for aerial and connection.</p> <p><b>TELEPHONE</b> 1 x telephone point. Owner to organise external service provider for account and connection.</p> <p><b>INTERIOR DOORS</b> Smooth face doors and timber jambs. Door hardware satin chrome lever type Schlage Lianna.</p> <p><b>TILES</b> Kitchen &amp; Laundry splashbacks. Vanity splash backs all lined with Matakana Sea Foam Gloss 75 x 300 tiles.</p> <p><b>PAINTING</b> Resene paint systems as specified.</p>	<p>Walls 1/2 White pointer Ceiling and trim 1/4 Black white</p> <p><b>HARDWARE</b> 2 x chrome toilet roil holder 2 x 750 x 900 polished edge mirror.</p> <p><b>WARDROBES</b> Full height sliding doors with wardrobe shelving.</p> <p><b>INTERNAL FINISHING</b> Skirting 60 x 10 single bevelled pine Architraves 40 x 10 single bevelled pine Scotia 40 x 20 bevelled pine.</p> <p><b>FLOOR COVERINGS</b> Carpet CHATEAU (60oz) Tussock X1907 cut pile carpet - TUSSOCK X1907.</p> <p>Vinyl Planks: IMPRESS (0.55mm wear layer) - colour 'STARLING' 58226.</p> <p><b>TRANSPORTATION</b> Not included in base pricing this can be included after Geotech and site inspection.</p> <p><b>PLANS</b> All standard plans and specification can be provided. Site specific plans are an extra cost.</p> <p><b>BUILDING PERMIT</b> HDC bearers up consent only.</p> <p><b>NOT INCLUDED</b> On site consents, curtains or blinds, site work, connections to services. These costs vary from site to site but can be included and priced separately.</p>
--	---	---	--



SALES OFFICE & MANUFACTURING  
1139 Maraekakaho Road, Hastings, New Zealand  
Ph. +64 6 870 8979 | P.O. Box 2543, Hastings 4156  
[www.HBhomes.nz](http://www.HBhomes.nz)

