



Rissington Model - monopitch

Boasting elegance and functionality in equal measure, this beautiful home is designed to elevate your lifestyle.

With a generous 119m² of living space, the Rissington offers room to thrive. Three well-appointed bedrooms ensure ample space for relaxation (all bedrooms can fit queen beds comfortably), including the master bedroom with an ensuite and walk-in wardrobe. The two stylish bathrooms provide a touch of luxury for your daily routine. The contemporary kitchen is complemented by a convenient scullery, perfect for culinary enthusiasts. An independent laundry area offers plenty of storage space, keeping your home tidy and organised.

Customisation Options:

- Tailor your home with the choice of adding a double garage, integral double garage or carport with single garage (ask the team for those plans)
- Or embrace the standalone design, catering to your unique needs and preferences.
- Choose from different decking options

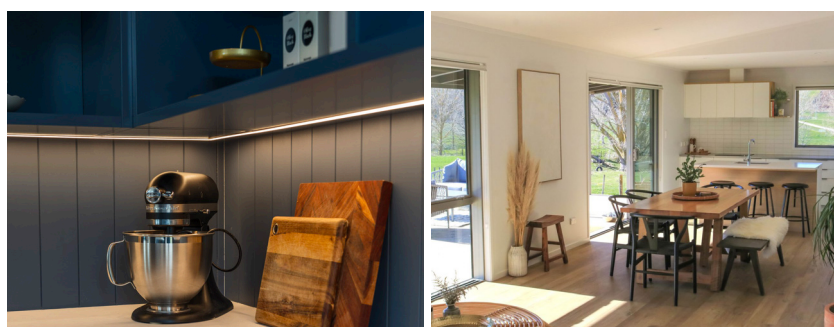
Explore the endless possibilities and envision your future in this stunning, feature-rich home.

BEDROOMS	3
BATHROOMS	2
FLOOR SIZE	119m ²
LENGTH	17.2m
WIDTH	6.8m
ROOF OPTIONS	monopitch & gable
SUITABLE FOR	first home, rental, secondary dwelling, holiday home

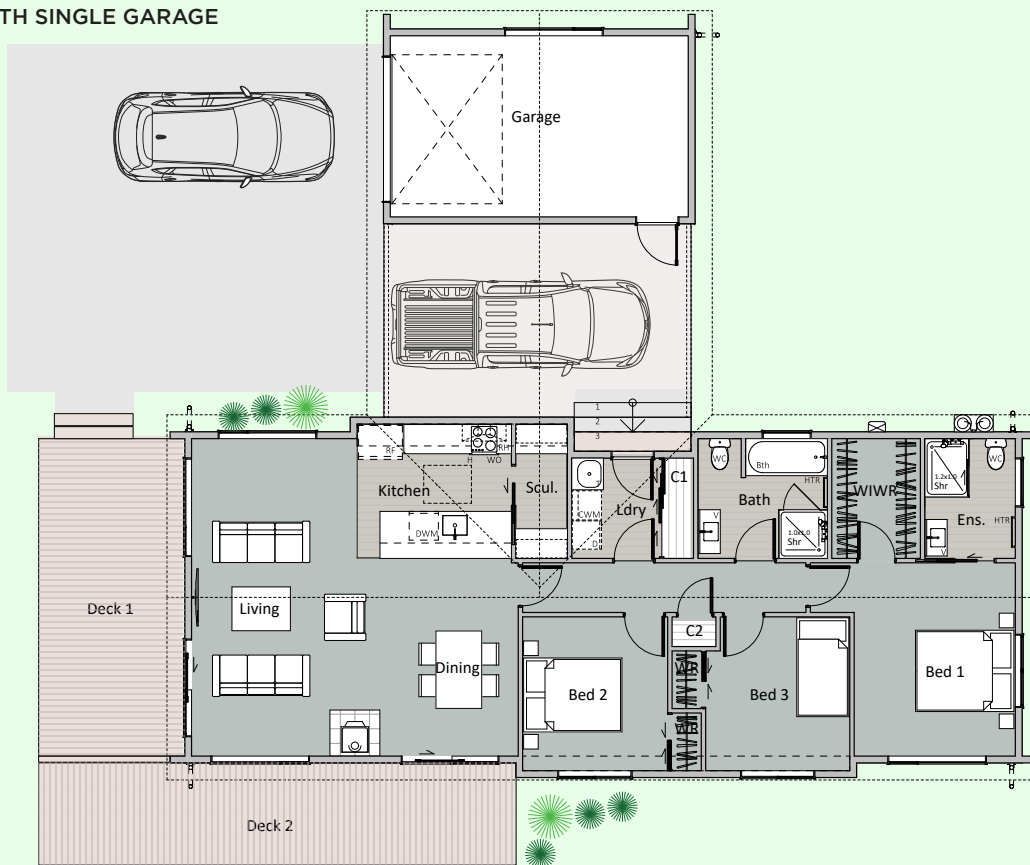
** Price and specifications subject to change*

Come & see us at
1139 Maraekakaho Road
Longlands, Hastings

P. +64 6 870 8979
E. office@hbhomes.nz
W. www.hbhomes.nz



CARPORT WITH SINGLE GARAGE



floorplan is shown with carport and single garage, which is an additional cost

SPECIFICATIONS:

INTERIOR

- Insulation to floor, wall and ceiling
- 2 x showers
- 1x bath
- 2 x WC
- 2 x vanities
- Gas water heating
- Kitchen as shown
- Wardrobe shelving
- Gib system interior wall lining throughout
- Electrical fit-out completed with CoC
- Internal doors and hardware
- Painted interior
- Floor coverings
- Fisher & Paykel appliances as specified
- Heat pump

EXTERIOR

- Colorsteel Endura roofing
- Cladding is a mixture of Vertical Colorsteel Corrugate and 9mm weathertex grooved
- Colorsteel longrun spouting
- Powdercoated thermally broken aluminium double glazed Low E windows & doors
- Treated PR entrance deck
- Painted exterior

PRICE EXCLUDES

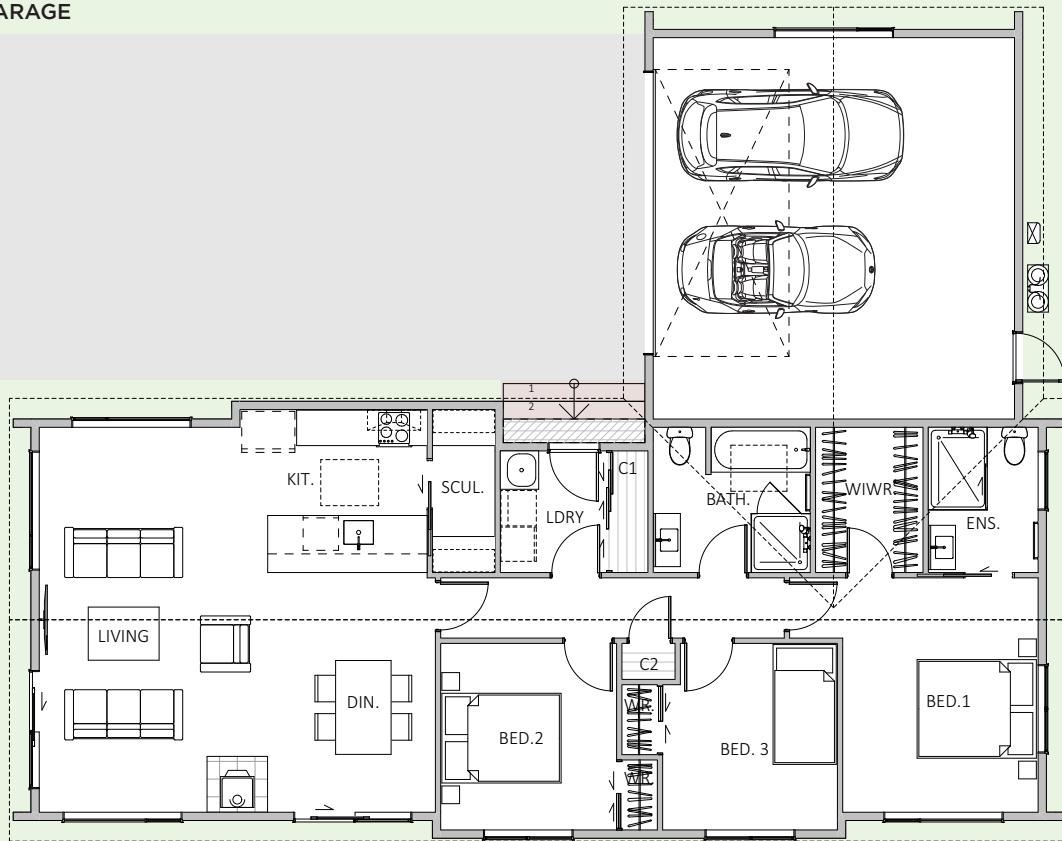
- Window dressings (blinds, curtains)
- Geotech, delivery, foundations & site installations
- Decks (different options and sizes available)
- LTA fees, site consents, new connections & contributions (*site specific*)

OPTIONS AVAILABLE

- Alternative exterior linings
- Different deck options and sizes available
- Integral garage, double garage, carport with single garage

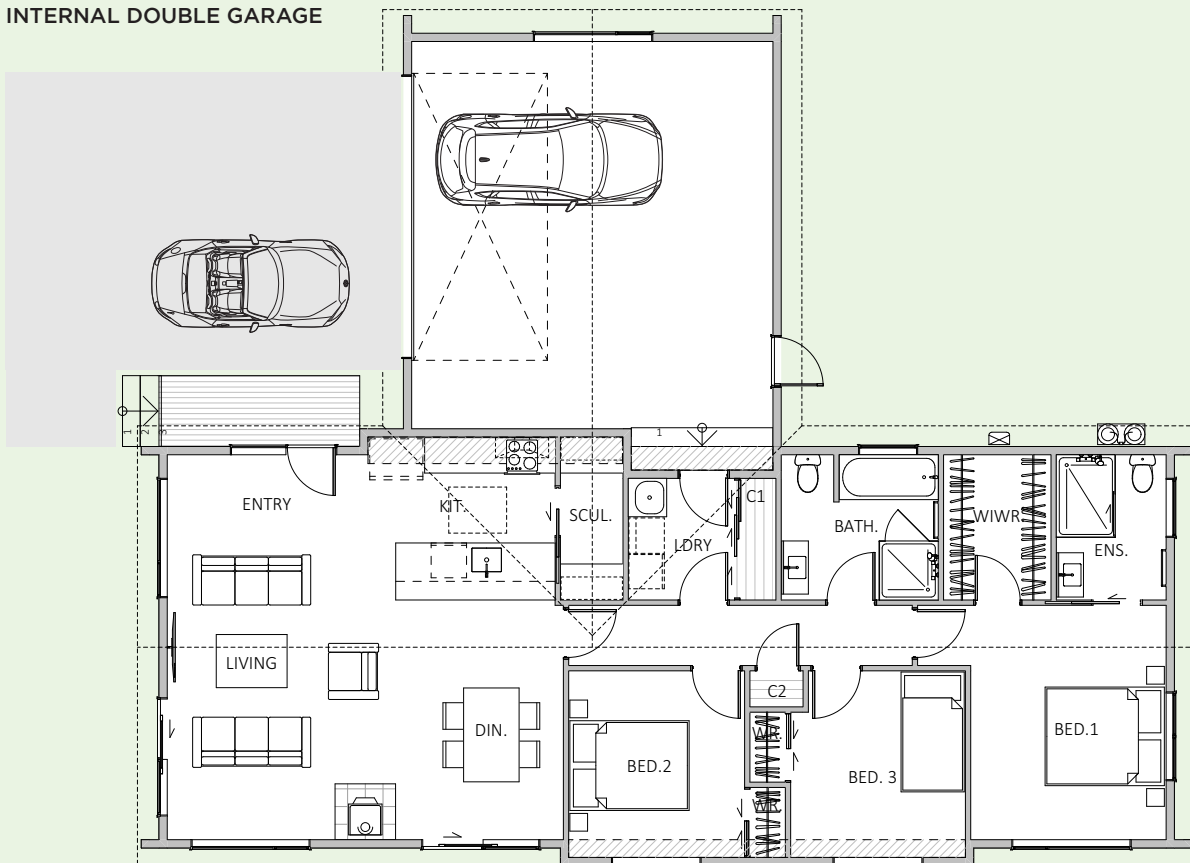
A lot of thought, design creative, practical building experience, and liveability options have been put into the creation of our Hawke's Bay Homes range. All our homes have been designed by an innovative and experienced architectural team. Each home is designed to maximise the living spaces and create a sense of space for every room in the house. All our transportable homes are specified with high quality, high-end finishes, and fittings and are completed to an impeccable standard. Remember too of course, that you can add, remove and make any changes that best reflect your personality and lifestyle.

DOUBLE GARAGE



floorplan is shown with double garage, which is an additional cost

INTERNAL DOUBLE GARAGE



floorplan is shown with integral garage, which is an additional cost