



## TukiTuki Model

Introducing our new 60m<sup>2</sup> granny flat design - the TukiTuki model. This compact design boasts an open kitchen/living/dining plan, with the option of one or two bedrooms.

The master bedroom includes a walk-in wardrobe with a modern storage system. Our cleverly designed bathroom maximises space with smart multi use solutions. Bespoke kitchen options tailored to your preferences are available. Choose between our versatile two or one bedroom floor plans. The building can come with a monopitch or gable roof.

BEDROOMS	1 or 2
BATHROOM	1
FLOOR SIZE	60m <sup>2</sup>
LENGTH	11.60m
WIDTH	5.50m
ROOF OPTIONS	gable & monopitch
ORIENTATIONS	left & right
SUITABLE FOR	granny flat, rental, secondary dwelling, bach or AirBnB

*\* Price and specifications subject to change*

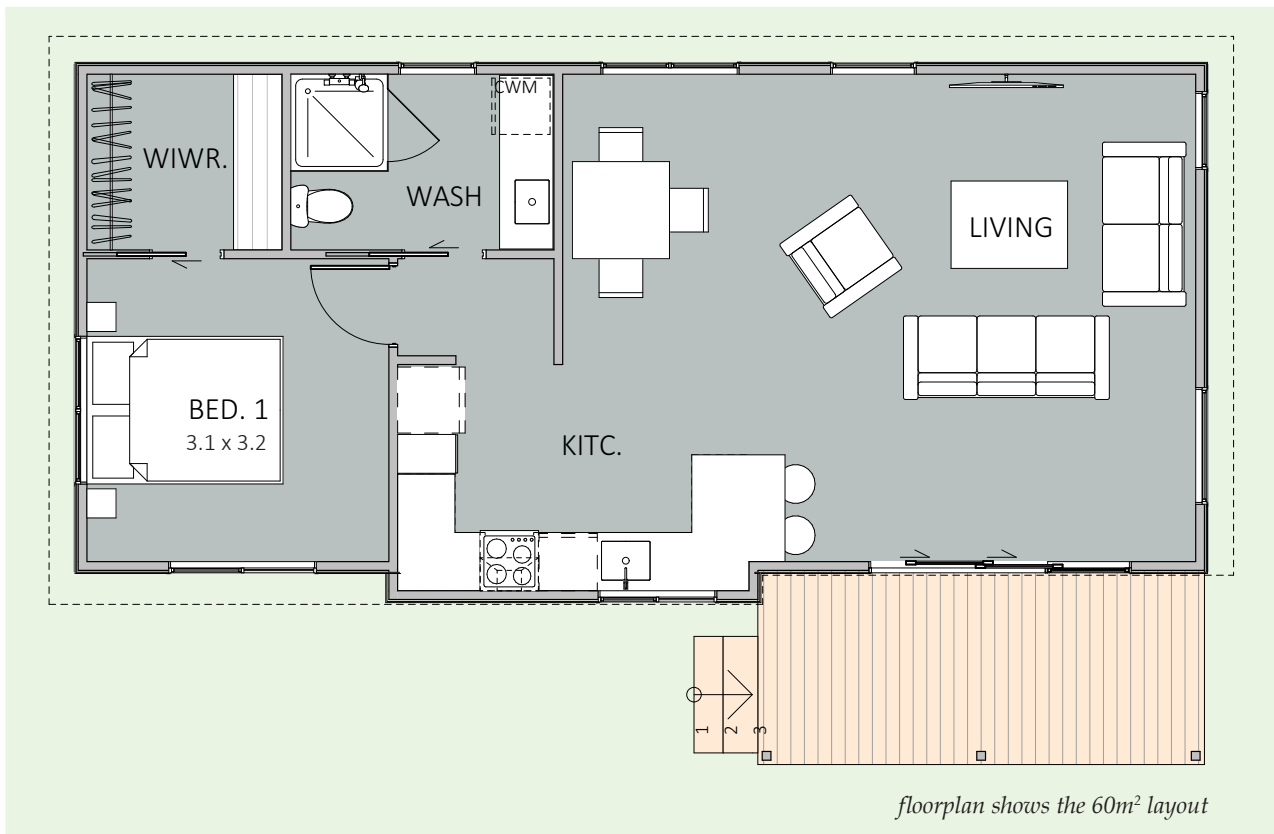


**Come & see us at**  
1139 Maraekakaho Road  
Longlands, Hastings

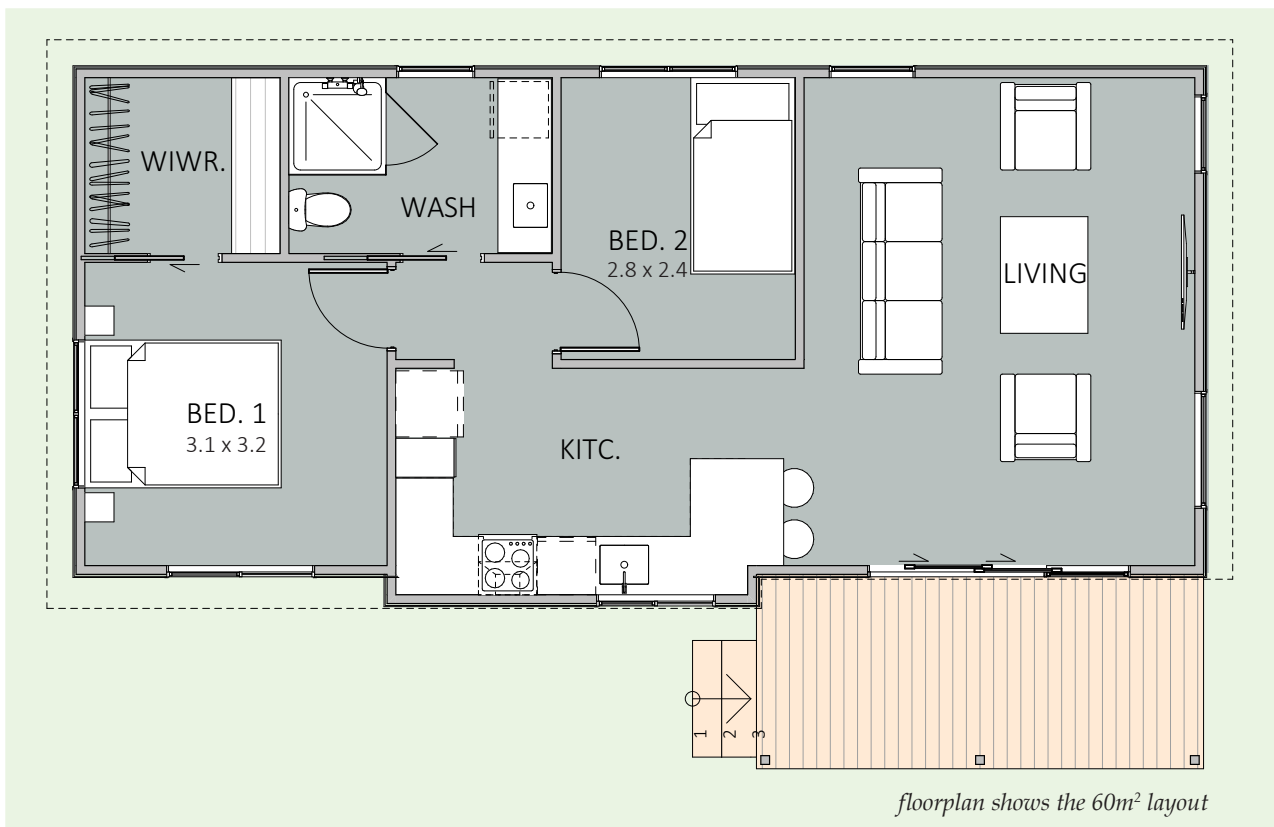
P. +64 6 870 8979  
E. [office@hbhomes.nz](mailto:office@hbhomes.nz)  
W. [www.hbhomes.nz](http://www.hbhomes.nz)



## ONE BEDROOM OPTION



## TWO BEDROOM OPTION



**SPECIFICATIONS:**

<b>INTERIOR</b> <ul style="list-style-type: none"> <li>- Insulation to floor, wall and ceiling</li> <li>- 1 x Shower</li> <li>- 1 x WC</li> <li>- 1x Vanity</li> <li>- Gas water heating or electric</li> <li>- Kitchen as shown</li> <li>- Wardrobe shelving</li> <li>- Gib system interior wall lining</li> <li>- Electrical fit-out completed</li> <li>- Internal doors and hardware</li> <li>- Painted interior</li> <li>- Floor coverings</li> <li>- Fisher &amp; Paykel appliances as specified</li> <li>- Daikin heat pump</li> </ul>	<b>EXTERIOR</b> <ul style="list-style-type: none"> <li>- Colorsteel Endura roofing</li> <li>- 12mm Shadowclad Ultra groove</li> <li>- Colorsteel quadrant spouting</li> <li>- Powdercoated aluminium double glazed thermally broken windows &amp; doors</li> <li>- Treated #1 PR decking</li> <li>- Painted exterior</li> </ul> <b>PRICE EXCLUDES</b> <ul style="list-style-type: none"> <li>- Window dressings (blinds, curtains)</li> <li>- Geotech, delivery, foundations &amp; site installations (<i>site specific</i>)</li> <li>- LTA fees, site consents, new connections &amp; contributions (<i>site specific</i>)</li> </ul>
<b>OPTIONS AVAILABLE</b> <ul style="list-style-type: none"> <li>- Alternative exterior linings</li> <li>- Bespoke kitchen options</li> <li>- Alternative bathroom options</li> </ul>	<ul style="list-style-type: none"> <li>- Different deck options and sizes available</li> <li>- Different roof styles</li> <li>- One or two bedroom options</li> <li>- Extra heatpumps and DVS systems</li> </ul>

A lot of thought, design creative, practical building experience, and liveability options have been put into the creation of our Hawke's Bay Homes range. All our homes have been designed by an innovative and experienced architectural team.

Each home is designed to maximise the living spaces and create a sense of space for every room in the house. All our transportable homes are specified with high quality, high-end finishes, and fittings and are completed to an impeccable standard. Remember too of course, that you can add, remove and make any changes that best reflect your personality and lifestyle.