



NEW DESIGN - RENDER TO FOLLOW

Poukawa Model

Introducing our new 70m² granny flat design - the Poukawa model. This compact design boasts an open kitchen/living/dining plan, with the option of one or two bedrooms.

The master bedroom includes a walk-in wardrobe with a modern storage system. Our cleverly designed bathroom maximises space with smart multi use solutions. Bespoke kitchen options tailored to your preferences are available. Choose between our versatile two or one bedroom floor plans. The building can come with a monopitch or gable roof.

BEDROOMS	1 or 2
BATHROOM	1
FLOOR SIZE	70m ²
LENGTH	12.80m
WIDTH	5.80m
ROOF OPTIONS	gable & monopitch
ORIENTATIONS	left & right
SUITABLE FOR	granny flat, rental, secondary dwelling, bach or Air BnB

** Price and specifications subject to change*

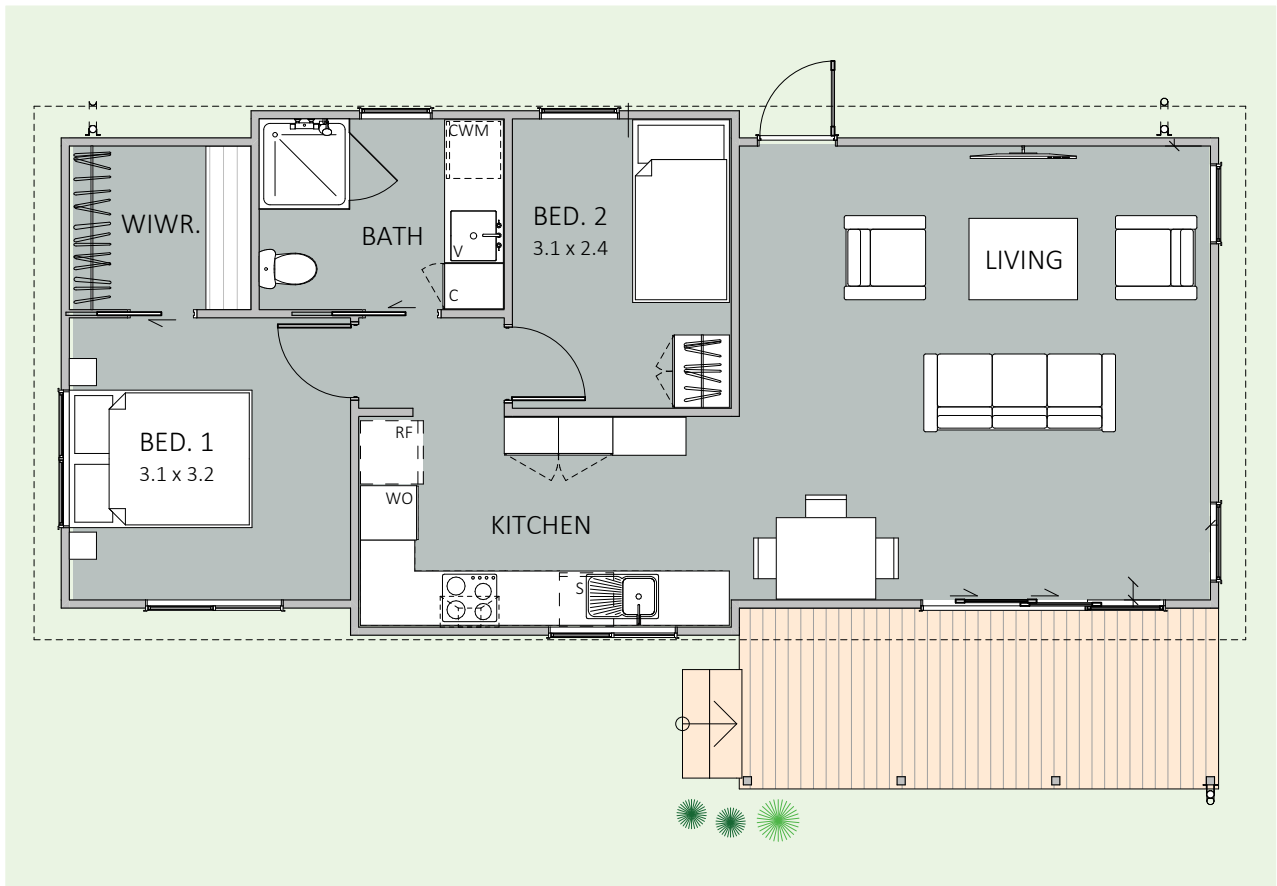


Come & see us at
1139 Maraekakaho Road
Longlands, Hastings

P. +64 6 870 8979
E. office@hbhomes.nz
W. www.hbhomes.nz



TWO BEDROOM OPTION



ONE BEDROOM OPTION



SPECIFICATIONS:

INTERIOR <ul style="list-style-type: none"> - Insulation to floor, wall and ceiling - 1 x Shower - 1 x WC - 1x Vanity - Gas water heating or electric - Kitchen as shown - Wardrobe shelving - Gib system interior wall lining - Electrical fit-out completed - Internal doors and hardware - Painted interior - Floor coverings - Fisher & Paykel appliances as specified - Daikin heat pump 	EXTERIOR <ul style="list-style-type: none"> - Colorsteel Maxam roofing - 10mm Weathertex Weathergroove - Colorsteel quadrant spouting - Powdercoated aluminium double glazed thermally broken windows & doors - PR treated 10.6m² covered decking - Painted exterior PRICE EXCLUDES <ul style="list-style-type: none"> - Window dressings (blinds, curtains) - Geotech, delivery, foundations & site installations (<i>site specific</i>) - LTA fees, site consents, new connections & contributions (<i>site specific</i>)
OPTIONS AVAILABLE <ul style="list-style-type: none"> - Alternative exterior linings - Bespoke kitchen options - Alternative bathroom options 	<ul style="list-style-type: none"> - Different deck options and sizes available - Different roof styles - One or two bedroom options - Extra heatpumps and DVS systems

A lot of thought, design creative, practical building experience, and liveability options have been put into the creation of our Hawke's Bay Homes range. All our homes have been designed by an innovative and experienced architectural team.

Each home is designed to maximise the living spaces and create a sense of space for every room in the house. All our transportable homes are specified with high quality, high-end finishes, and fittings and are completed to an impeccable standard. Remember too of course, that you can add, remove and make any changes that best reflect your personality and lifestyle.