



## Crownthorpe Model

Thoughtfully designed with lifestyle in mind, the Crownthorpe offers the flexibility of 3 or 4 bedrooms to suit your needs. At its heart, a light-filled kitchen with a well-appointed scullery makes entertaining easy and everyday living seamless. The two spacious living areas provide room for connection and retreat, while the master suite features a generous walk-in wardrobe and ensuite for added comfort.

Children's bedrooms are positioned at the opposite end of the home, alongside a family bathroom, large laundry, and boot room creating the perfect layout for busy households.

Whether you're planning a home for a growing family or a relaxing coastal escape, the Crownthorpe blends versatility, space, and style with ease.

BEDROOMS	3-4
BATHROOMS	2
FLOOR SIZE	147m <sup>2</sup>
LENGTH	20.0m
WIDTH	7.6m
ROOF OPTIONS	hip roof
SUITABLE FOR	first home, rental, holiday home, farm accommodation

*\* Price and specifications subject to change*

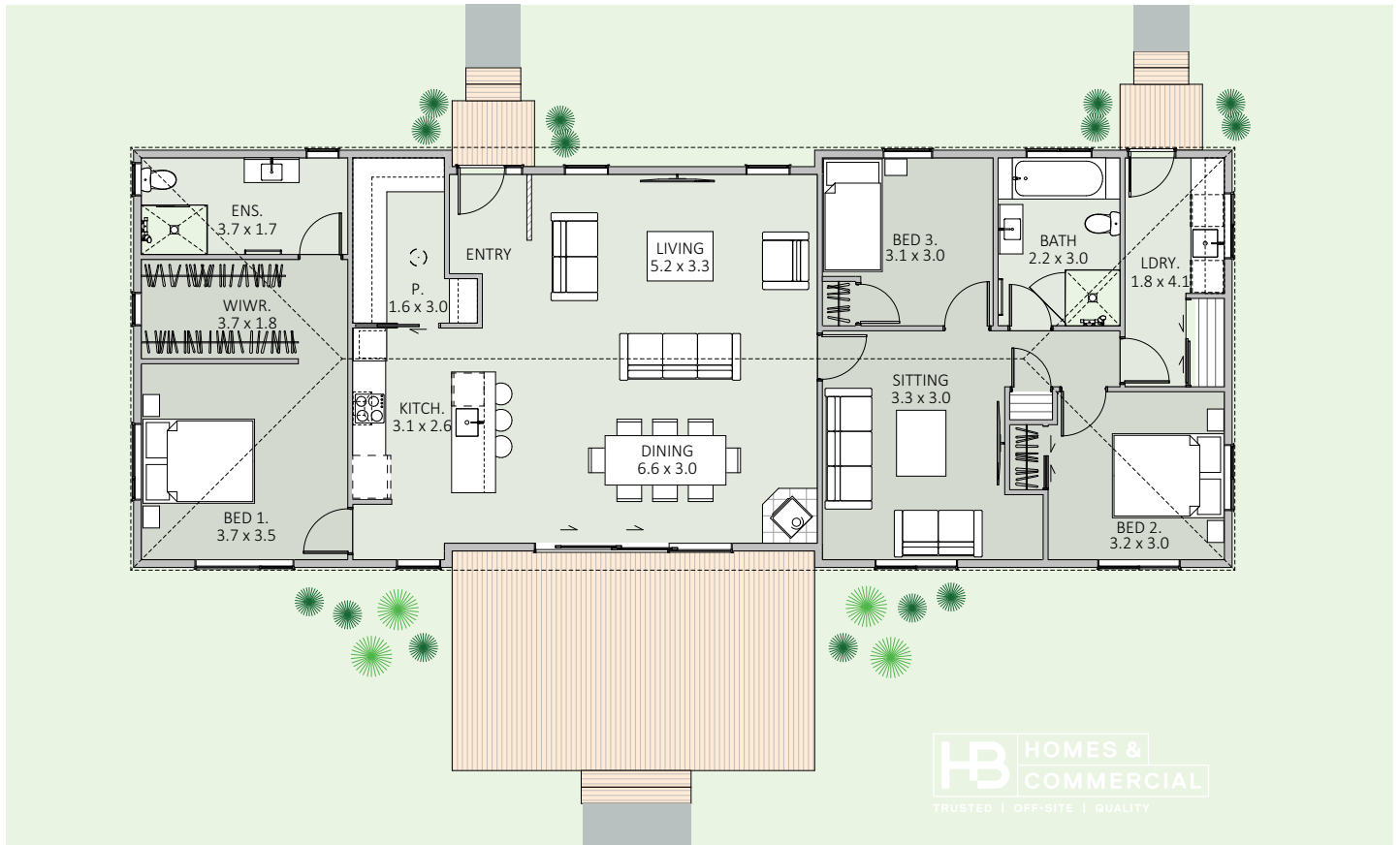


**Come & see us at**  
1139 Maraekakaho Road  
Longlands, Hastings

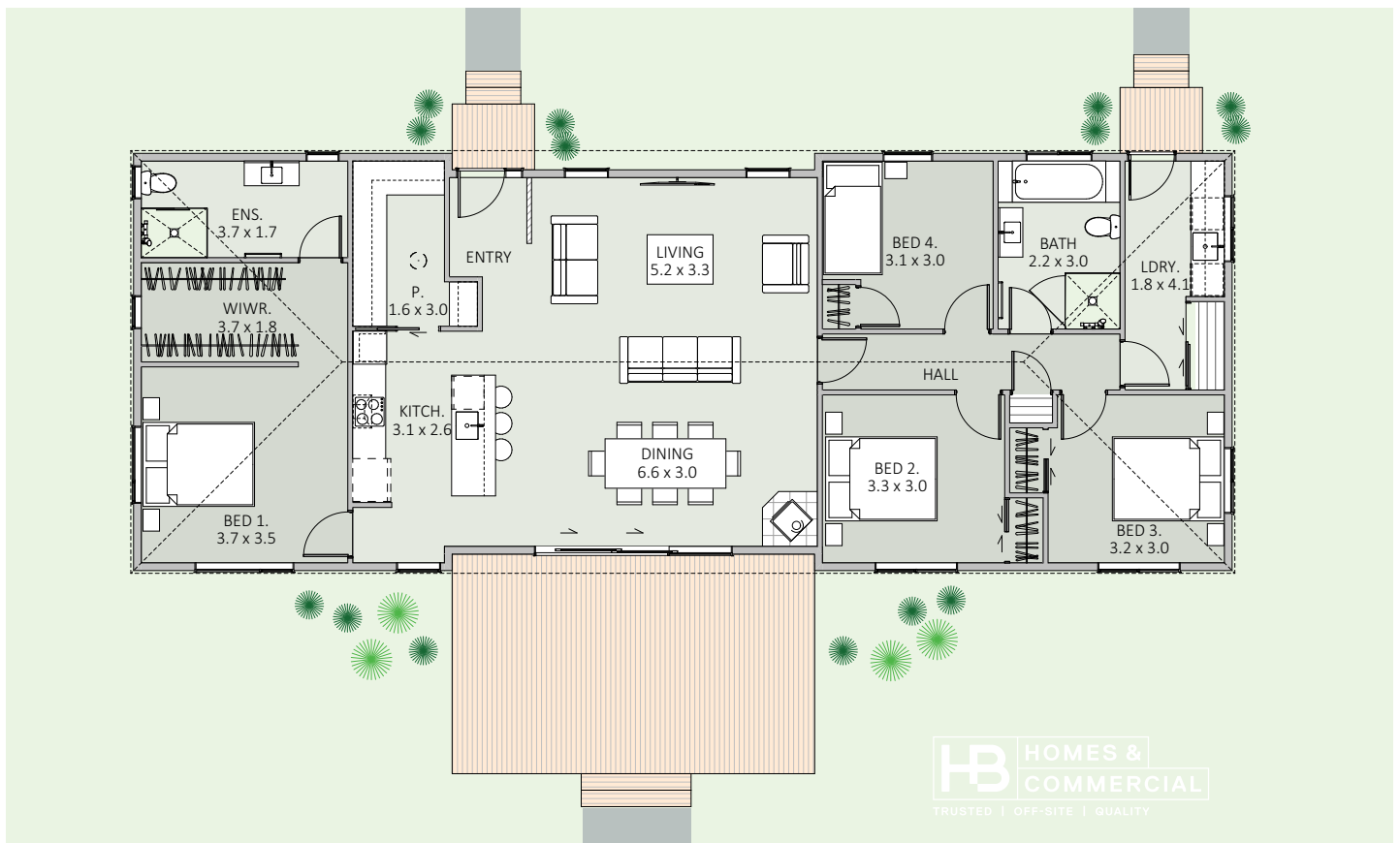
P. +64 6 870 8979  
E. [office@hbhomes.nz](mailto:office@hbhomes.nz)  
W. [www.hbhomes.nz](http://www.hbhomes.nz)



## THREE BEDROOM OPTION



## FOUR BEDROOM OPTION



**SPECIFICATIONS:****INTERIOR**

- Insulation to floor, wall and ceiling
- 2,200mm high exterior and interior joinery
- 2,550mm stud height
- 2x showers
- 2x WCs
- 1x bath
- 2x vanities
- Gas or electric water heating
- Kitchen as shown\*
- Wardrobe shelving
- Gib system interior wall lining
- Electrical fit-out completed
- Internal doors and hardware
- Painted interior
- Floor coverings
- Fisher & Paykel appliances as specified
- Daikin heat pump

**EXTERIOR**

- Abodo WB12 vertical Weatherboard
- 9.5mm Weathertex Weathergroove
- Colorsteel Maxam MC760 roof
- Colorsteel quadrant spouting
- Powdercoated aluminium thermally broken windows & doors
- Treated #1 PR decking
- Painted exterior

**PRICE EXCLUDES**

- Window dressings (blinds, curtains)
- Geotech, delivery, foundations & site installations (*site specific*)
- LTA fees, site consents, new connections & contributions (*site specific*)

\* Price excludes fireplace, fridge & decking

**OPTIONS AVAILABLE**

- Alternative exterior linings
- Alternative Bespoke kitchen options
- Alternative bathroom options
- Extra heatpumps, fire place and DVS systems
- Different deck options and sizes available
- Different roof styles
- Three or four bedroom options