



Kereru Model

100m² of Smart, Space Efficient Living - the Kereru is a cleverly designed 2-bedroom home that makes the most of every square metre. With 1.5 bathrooms, a generous walk-in wardrobe, and plenty of built-in storage, it's ideal for those seeking comfort without compromise.

The kitchen includes a spacious scullery/laundry, perfect for keeping things tidy while entertaining or cooking up a storm.

Well suited to smaller sites or as a rural secondary dwelling, the Kereru offers simplicity, style, and smart design in a compact footprint.

BEDROOMS	2
BATHROOMS	1.5
FLOOR SIZE	100m ²
LENGTH	14.0m
WIDTH	7.2m
ROOF OPTIONS	gable roof
SUITABLE FOR	first home, rental, secondary dwelling, holiday home, farm accommodation

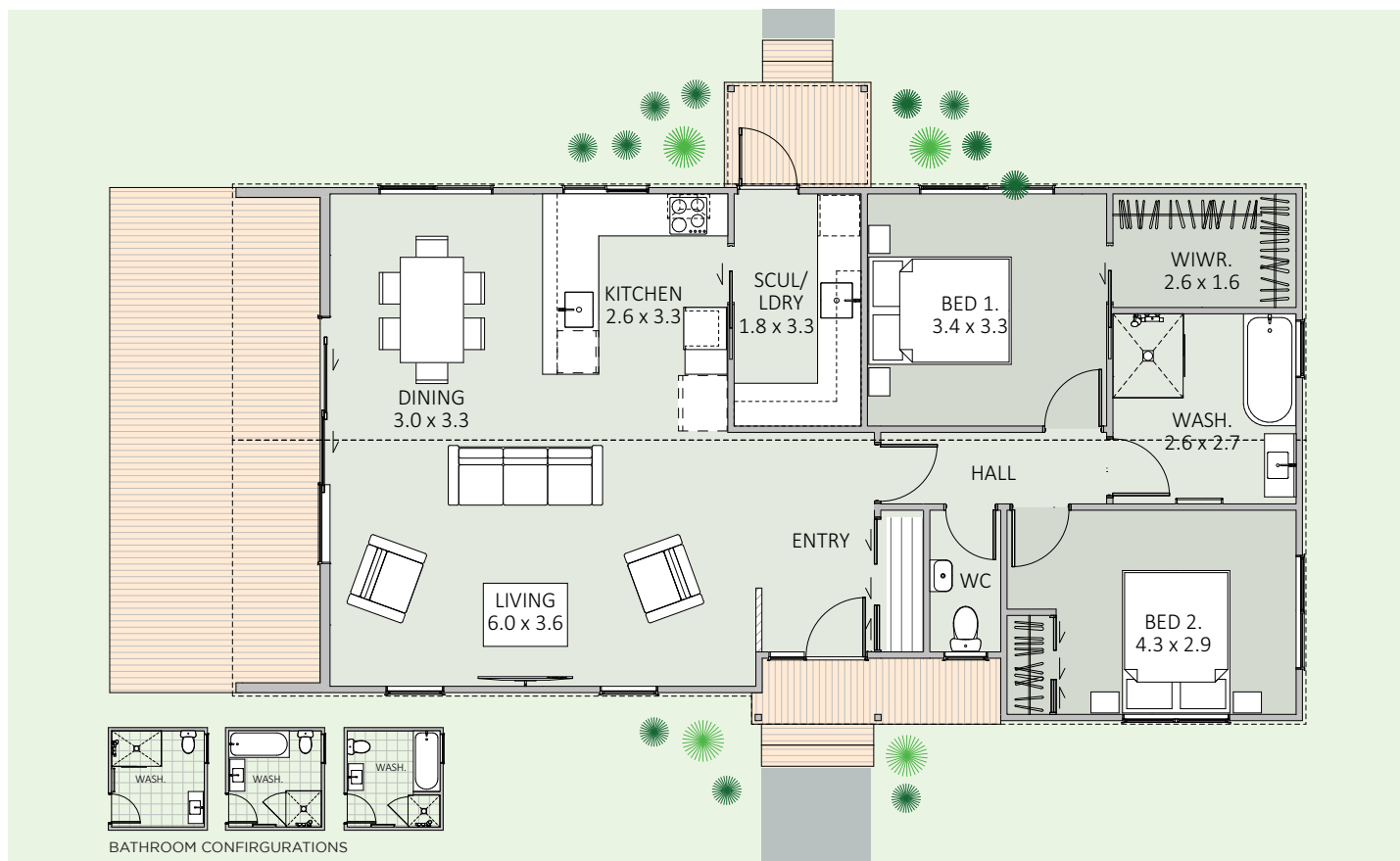
** Price and specifications subject to change*



Come & see us at
1139 Maraekakaho Road
Longlands, Hastings

P. +64 6 870 8979
E. office@hbhomes.nz
W. www.hbhomes.nz





SPECIFICATIONS:

INTERIOR

- Insulation to floor, wall and ceiling
- 2,000mm high exterior and interior joinery
- 2,400mm stud height
- Gable roof with raking ceiling in l/d/k area
- 1x shower
- 1x WCs
- 1x bath
- 1x vanity
- Gas or electric water heating
- Kitchen with scullery/ laundry as shown
- Wardrobe shelving
- Gib system interior wall lining
- Electrical fit-out completed
- Internal doors and hardware
- Painted interior
- Floor coverings
- Fisher & Paykel appliances as specified
- Daikin heat pump

EXTERIOR

- 9.5mm Weathertex Weathergroove with Cedar board feature walls
- Colorsteel Maxam corrugate roofing
- Colorsteel quadrant spouting
- Powdercoated aluminium thermally broken windows and doors including low e glazing
- Painted exterior
- Covered entries

PRICE EXCLUDES

- Window dressings (blinds, curtains)
- Geotech, delivery, foundations & site installations (*site specific*)
- Main decking
- LTA fees, site consents, new connections & contributions (*site specific*)

OPTIONS AVAILABLE

- Alternative exterior linings
- Alternative Bespoke kitchen options
- Alternative bathroom options
- Different deck options and sizes available
- Three or four bedroom options
- Extra heatpumps, fire place and DVS systems